

FED. ROAD DIST. NO.	STATE	PROJECT NO.	FISCAL YEAR	SHEET NO.	TOTAL SHEETS
6	ARK.		1942	1	12
STATE JOB NO. 5243					

STATE OF ARKANSAS
STATE HIGHWAY COMMISSION

**PLAN OF PROPOSED BRIDGE
OVER SOUTH SYLAMORE CREEK
YELLVILLE-MOUNTAIN VIEW ROAD
STONE COUNTY
ROUTE 14 SEC. 6
JOB No 5243**

INDEX OF SHEETS

SHEET No.	DRWG No.	TITLE
1	G38G	Title Sheet
2	G387	Schedule of Quantities and Typical Roadway Sections
3	G388	Plan and Profile of Approaches
4	G389	Layout of Bridge over South Sylamore Creek
5	G390	Details of Anchorages
6	G391	Details of Abutment No. 1
7	G392	Details of Abutment No. 2
8	G393	General Details of 200'-0" Suspension Span
9	G394	Details of Tower and Hanger Clamps
10	G395	Details of Floor System and Deck
11	1888	Embankment Construction at Bridge Ends and Backfill for Structures
12	1891	Basis for Computing Excavation for Structures

QUANTITIES

ITEM No.	ITEM	QUANTITY	UNIT
102	Solid Rock Excavation	935	Cu. Yds.
102	Unclassified Excavation	550	Cu. Yds.
103	Dry Excavation for Structures	347	Cu. Yds.
103	Wet Excavation for Structures	34	Cu. Yds.
103	Solid Rock Excavation for Structures	67	Cu. Yds.
115	Fence Moved and Reconstructed	21.2	Rods
SP 802	Class A Concrete for Bridges	132.8	19.9 Cu. Yds.
SP 803	Reinforcing Steel (includes fabrication and placing only of 12,630 lbs. of reinforcing steel on hand)	12,630	15230 Lbs.
SP 807	Structural Steel in Beam Spans	10,740	12680 Lbs.
SP 807	Fabrication and Erection of Structural Steel on Hand	39,940	Lbs.
SP 807	Miscellaneous Hardware	2,760	Lbs.
809	Untreated Bridge Timber	12,265	M.F.B.M.
809	Treated Bridge Timber	6,393	M.F.B.M.
SP	Traffic Service Gravel	125	Cu. Yds.
SP	Removal of Present Structure and Re-erecting Cables	Complete	Lump Sum

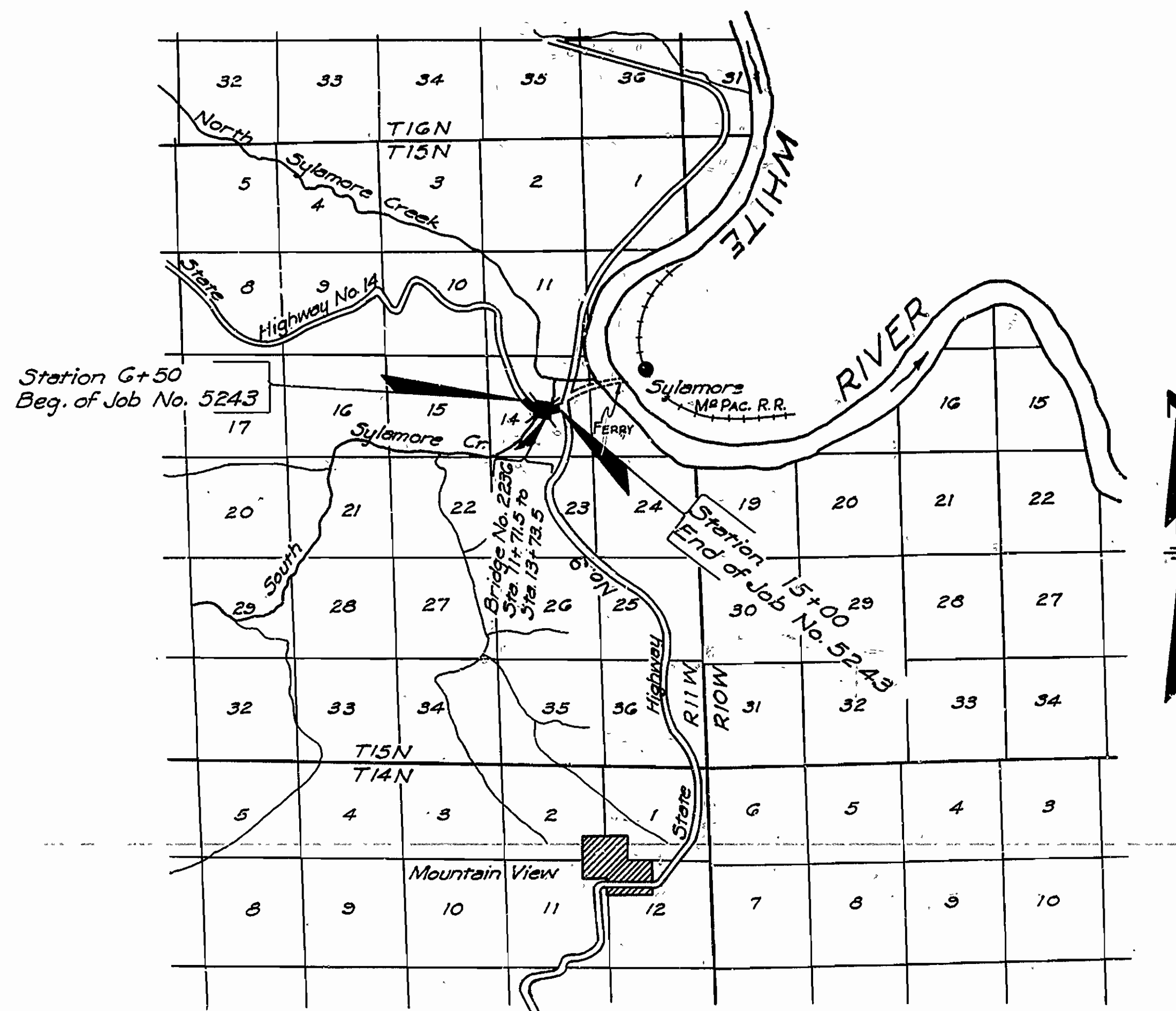
SPECIFICATIONS
Arkansas State Highway Commission Standard Specifications for Road and Bridge Construction, adopted March 1, 1940.

PAMPHLETS

- Division I Parts I
- Division II Part 8a
Part 8b
Part 8c
- Division III
- Division IV

SPECIAL PROVISIONS

No.	Description	No. of Sheets
	Licensing of Contractors (4-29-41)	1
	Revision of Art. 2.11, Sec. 2 (10-17-40)	2
7-2	Unemployment Compensation or Insurance	1
8-2	Employment of Labor (Rev. 1-21-42)	1
9-5	Partial Payment (7-2-41)	1
9-6	Common Carrier Rates (3-11-42)	1
450-1	Traffic Service Gravel (9-25-36)	2
803-1	Revision of Article 803.2	1
807-3	Revision of Article 807.37	1
850-1	Engineers Field Office	1
853-1	Machine Mixing	1
	Fabrication of Structural Steel on Hand	2
	Miscellaneous Hardware	1
	Removal of Present Structure and Re-erecting Cables	2



LAYOUT

Scale: 1" = 1 MILE

LENGTH OF PROJECT=	850'-0" OR	0.160 MILES
LENGTH OF BRIDGES=	202'-0" OR	0.038 MILES
LENGTH OF EMBANKMENT=	648'-0" OR	0.122 MILES
LENGTH OF JOB=	850'-0" OR	0.160 MILES

RECOMMENDED FOR APPROVAL

APPROVED

APPROVED

CHAIRMAN-STATE HIGHWAY COMMISSION

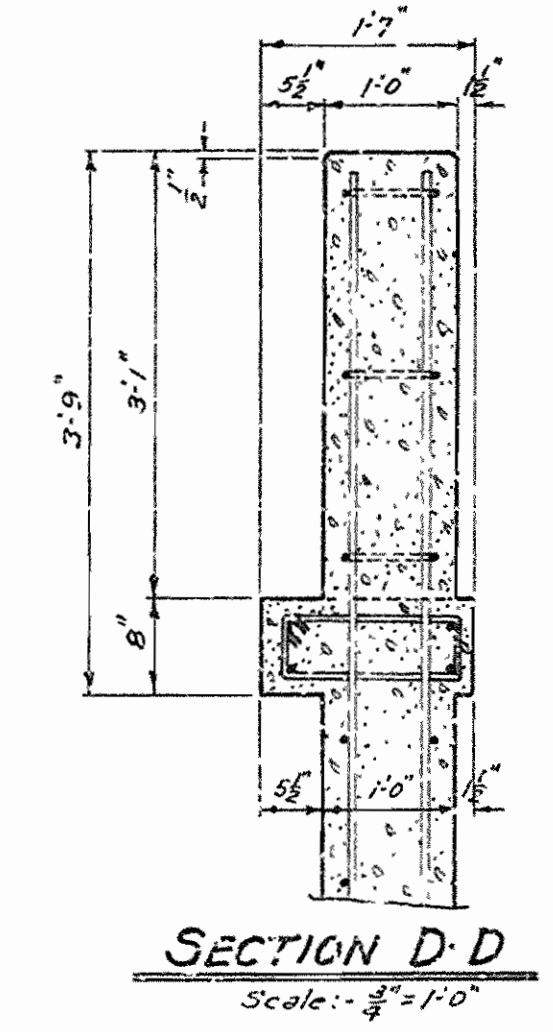
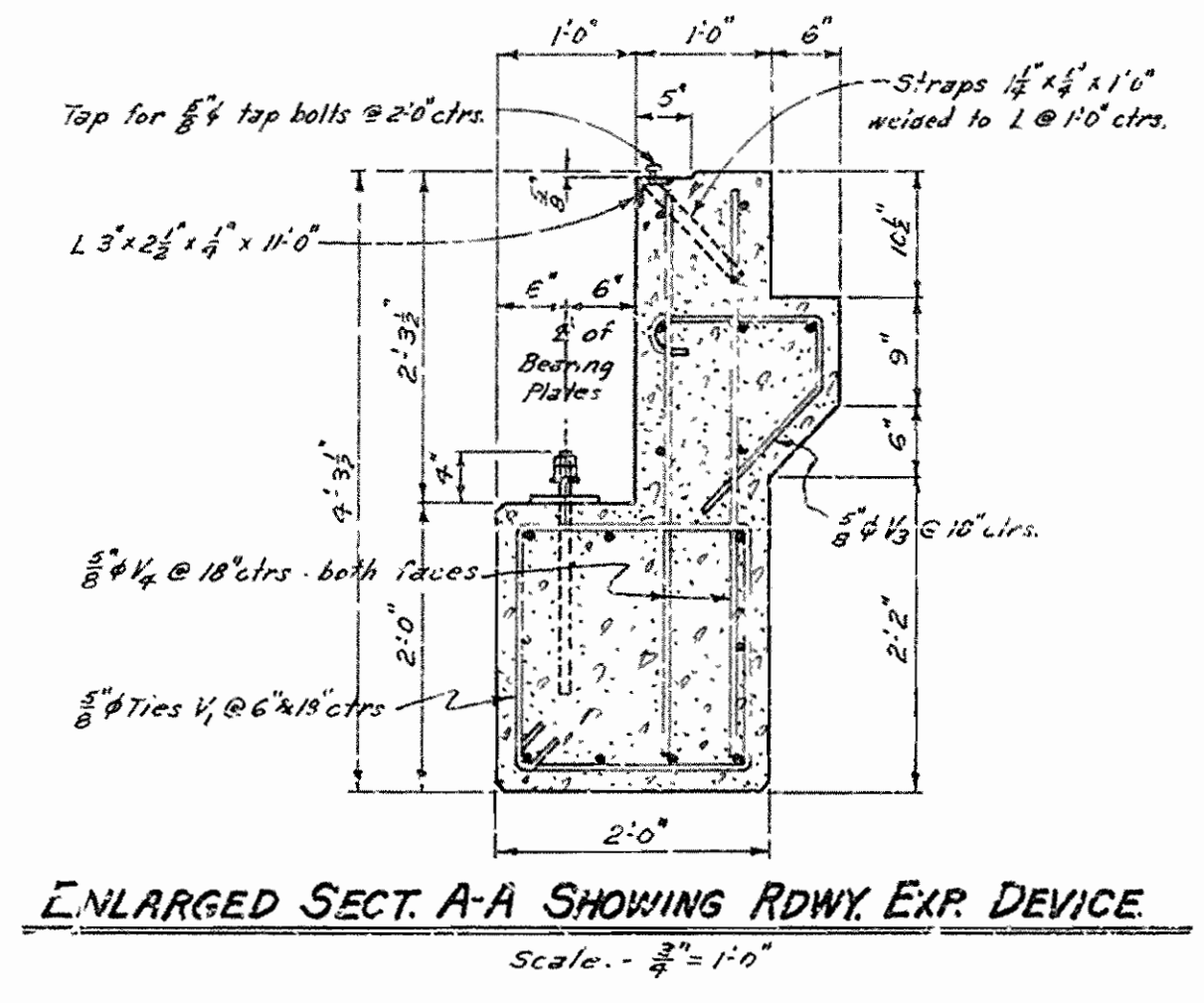
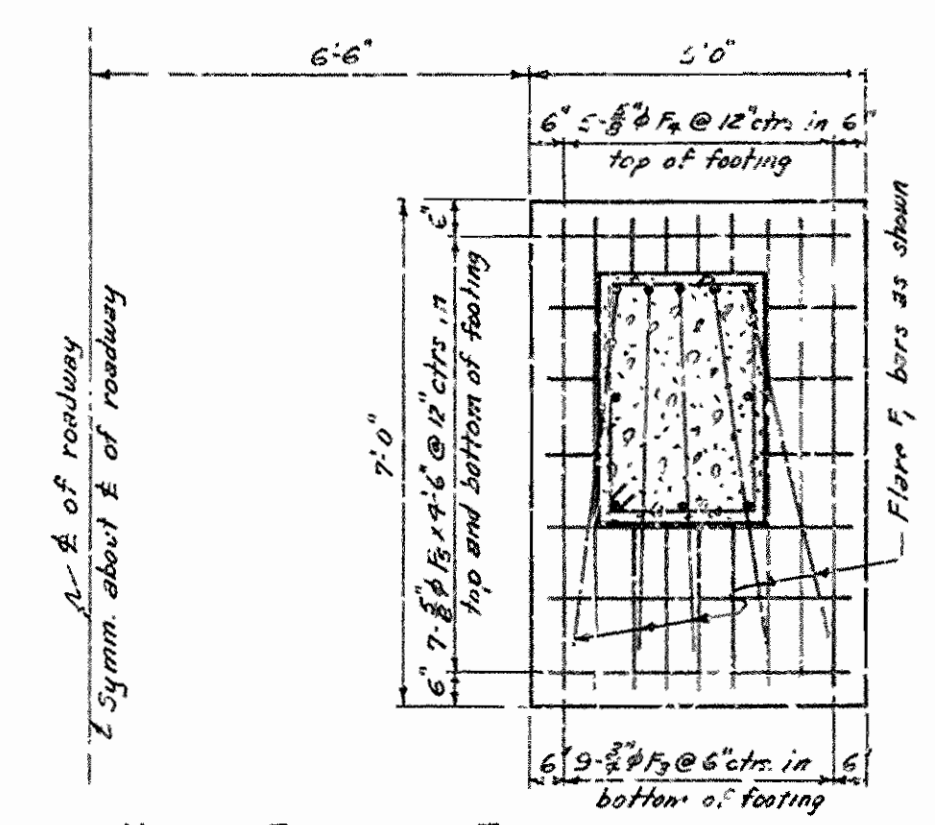
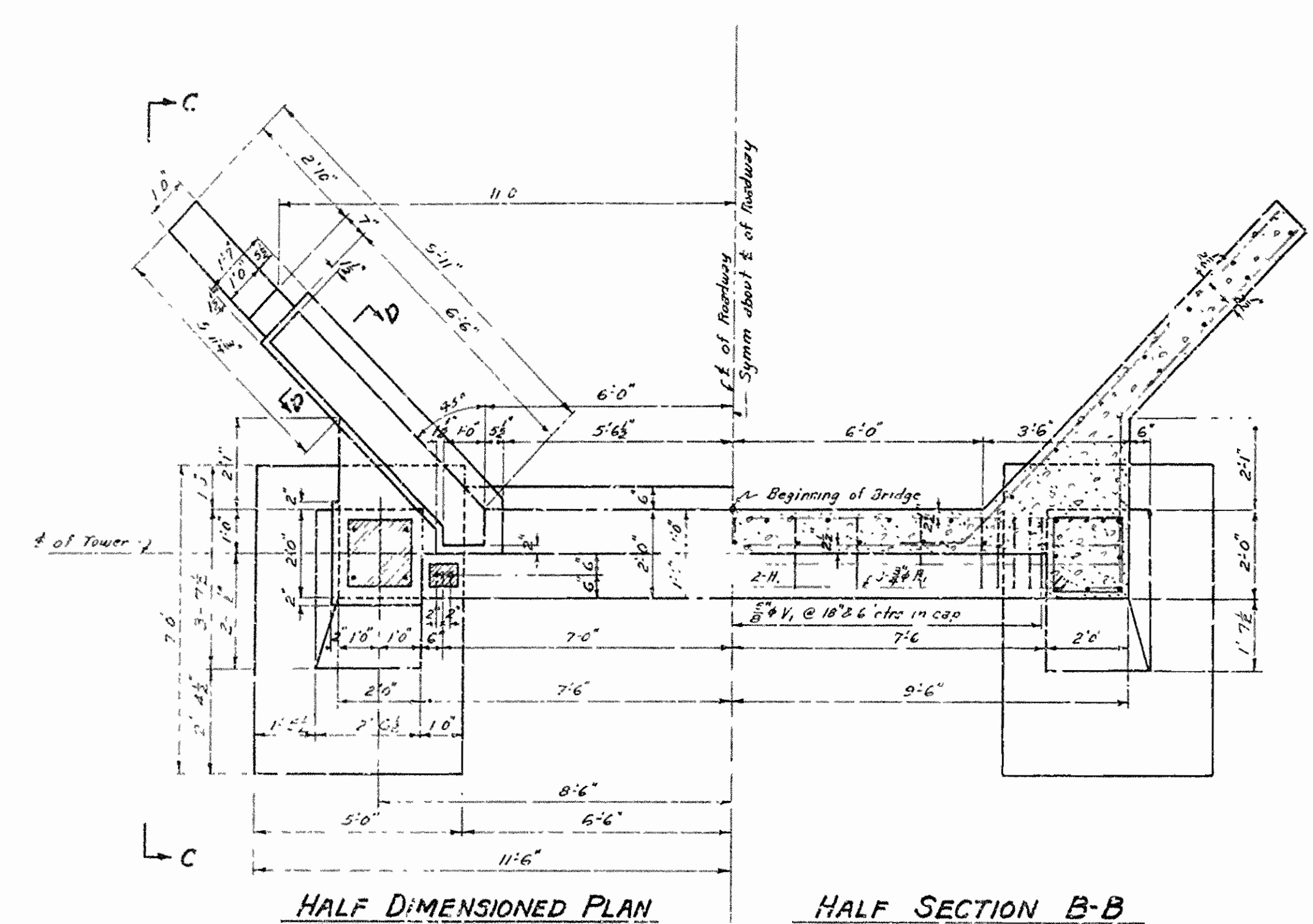
APPROVED

STATE HIGHWAY ENGINEER

W.A. Carter
PRINCIPAL HIGHWAY ENGINEER (BRIDGES)

207

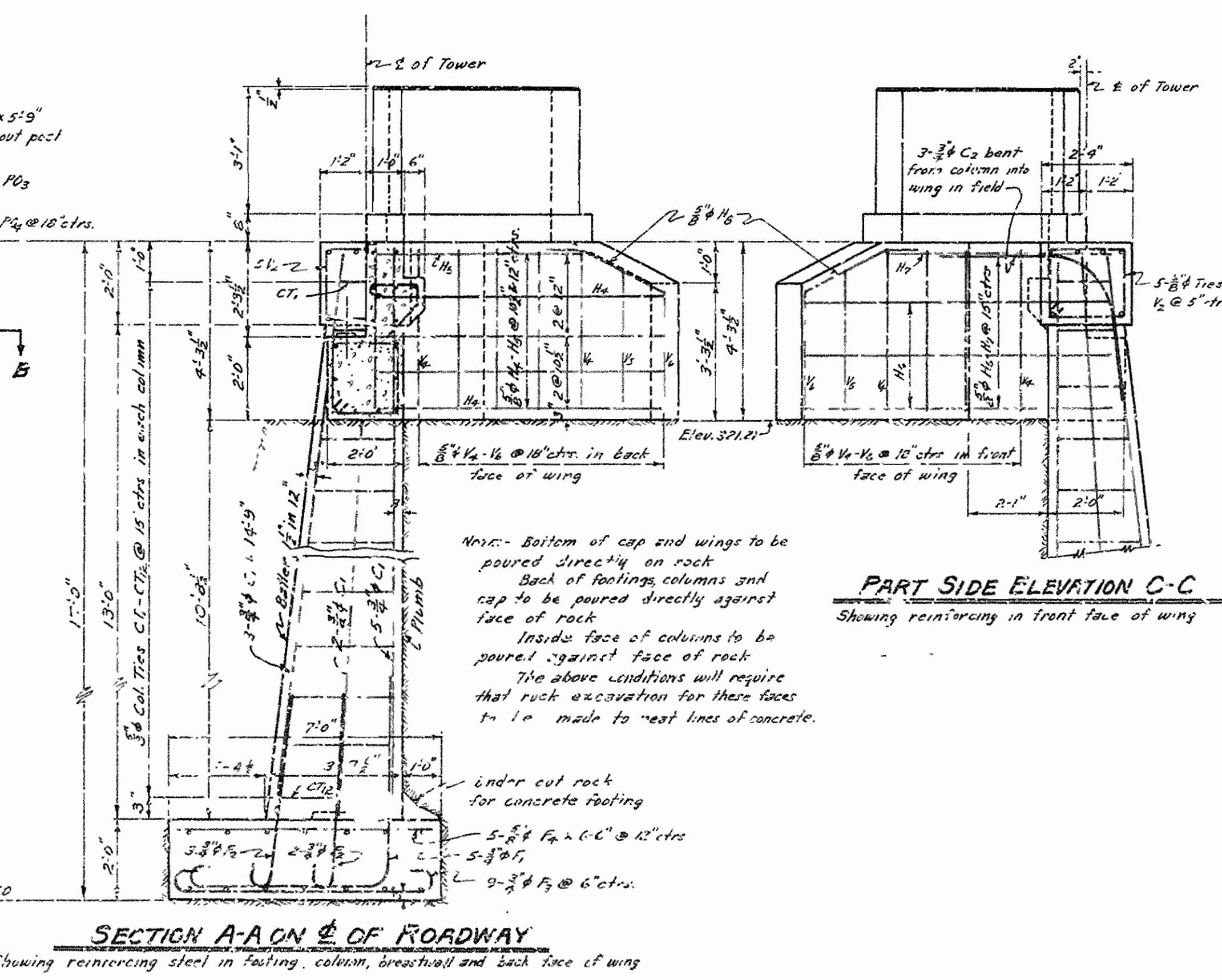
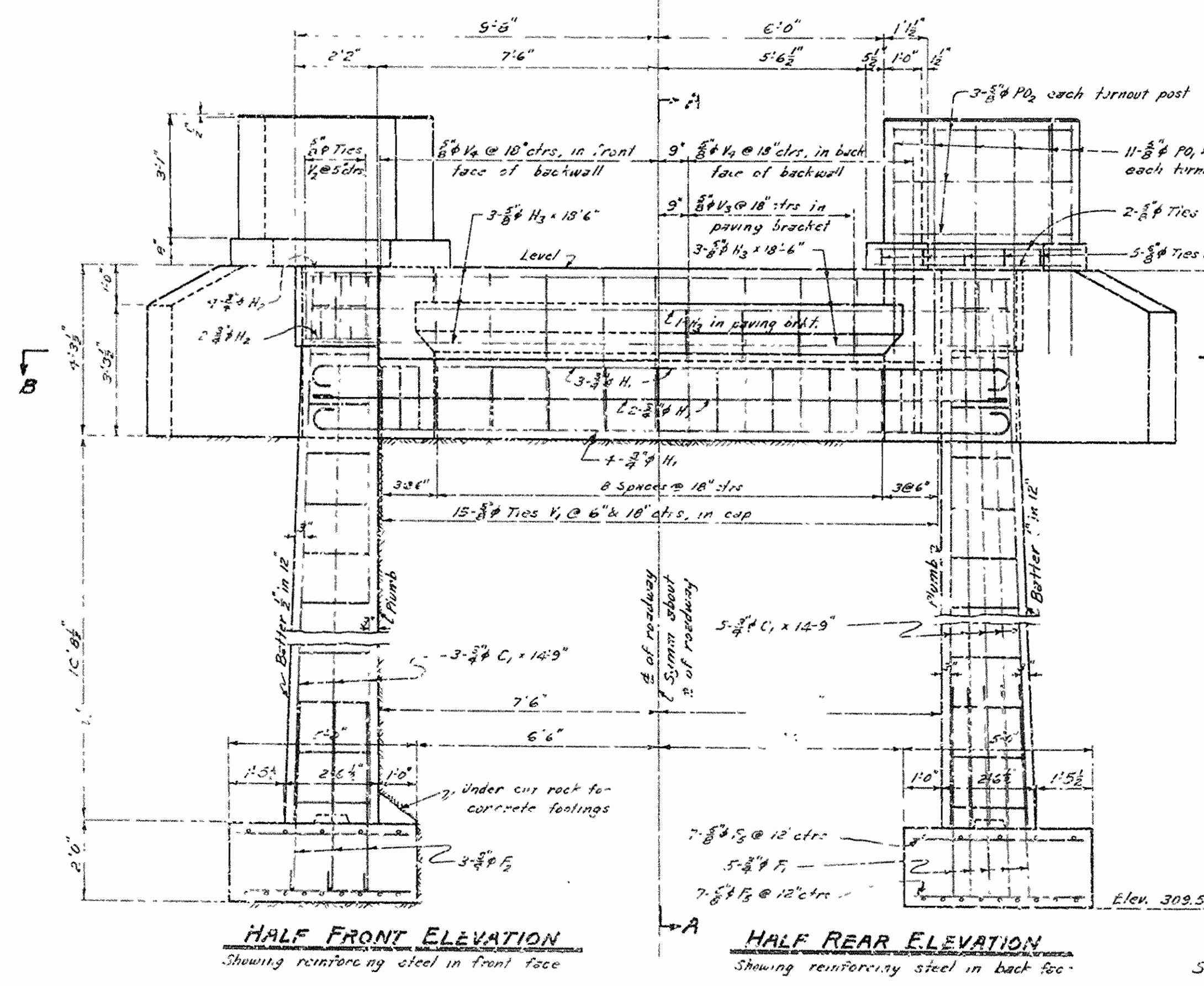
FED. ROAD DIST. NO.	STATE	PROJECT NO.	FISCAL YEAR	SHEET NO.	TOTAL SHEETS
6	ARK.		1942	6	12
STATE JOB NO. 5243					



BAR LIST FOR ABUTMENT NO. 1

MARK	SIZE	NO. REQD.	LENGTH	A	B	BENDING DIAGRAM
F ₁	#8	10	10'-9"			
F ₂	#8	10	5'-6"			
F ₃	#8	18	8'-0"	6'-6"	1'-6"	
H ₁	#8	9	20'-0"	18'-6"	0'-6"	
H ₂	#8	12	1'-11"	Straight		
C ₁	#8	20	14'-9"	Straight		
C ₂	#8	6	9'-0"	Straight		
PO ₁	#8	22	5'-3"	Straight		
F ₄	#8	10	6'-6"	Straight		
F ₅	#8	28	4'-6"	Straight		
H ₃	#8	7	10'-6"	Straight		
H ₄	#8	8	12'-0"	10'-6"	1'-6"	
H ₅	#8	2	9'-4"	7'-10"	1'-6"	
H ₆	#8	6	9'-6"	6'-0"	3'-6"	
H ₇	#8	2	6'-10"	3'-9"	3'-6"	
H ₈	#8	4	4'-3"			
CT ₁	#8	2	Varies	Varies	Varies	
CT ₂	#8	Each	7'-0" to 11'-7"	1'-6" to 3'-2"	1'-6" to 2'-2"	
V ₁	#8	15	7'-5"	1'-0"	1'-0"	
V ₂	#8	10	8'-1"	2'-0"	1'-0"	
V ₃	#8	8	3'-9"			
V ₄	#8	39	4'-0"	Straight		
V ₅	#8	4	3'-6"	Straight		
V ₆	#8	4	3'-0"	Straight		
PO ₂	#8	6	14'-5"			
PO ₃	#8	4	16'-5"			
PO ₄	#8	10	9'-1"			

NOTE: Dimensions relating to reinforcing steel are to center of bars.



GENERAL NOTES

All concrete to be Class "A" and shall be poured in the dry. All exposed corners to be chamfered unless otherwise noted.
Solid rock excavation to be made to neat lines of footings, columns and cap as shown on plans.
For details of superstructure see Drawings No. 6393, 6394, & 6395.
Maximum foundation pressure = 50 lbs. per square foot.
Of the reinforcing bars required, the #8 and #9 bars in 25' lengths are on hand and are stored at the Highway District No. 9 Shops at Fort Smith, Arkansas.

**DETAILS OF ABUTMENT NO. 1
BRIDGE OVER SOUTH SYLAMORE CREEK**

YELVILLE - MOUNTAIN VIEW ROAD
STONE COUNTY
ROUTE 14 SEC. 6

ARKANSAS STATE HIGHWAY COMMISSION
LITTLE ROCK, ARK.

Drawn By: W.C.H. Date: 7-27-42
Traced By: W.C.H. Date: 7-20-44
Checked By: _____ Date: _____
BRIDGE NO. 2236 DRAWING NO. 6391

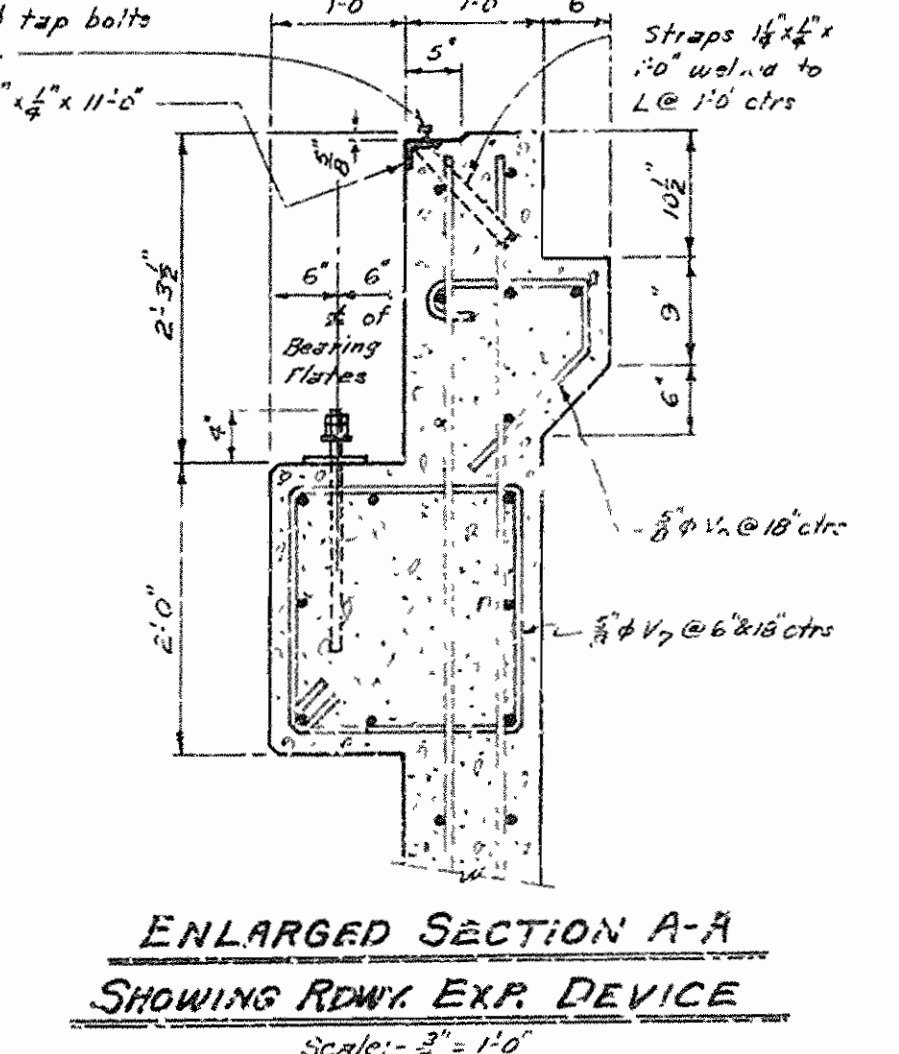
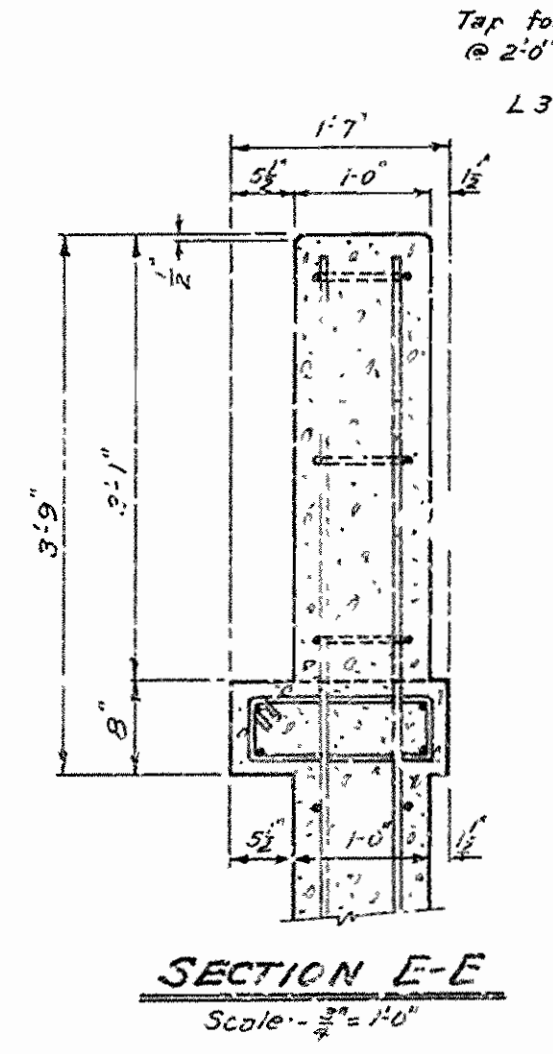
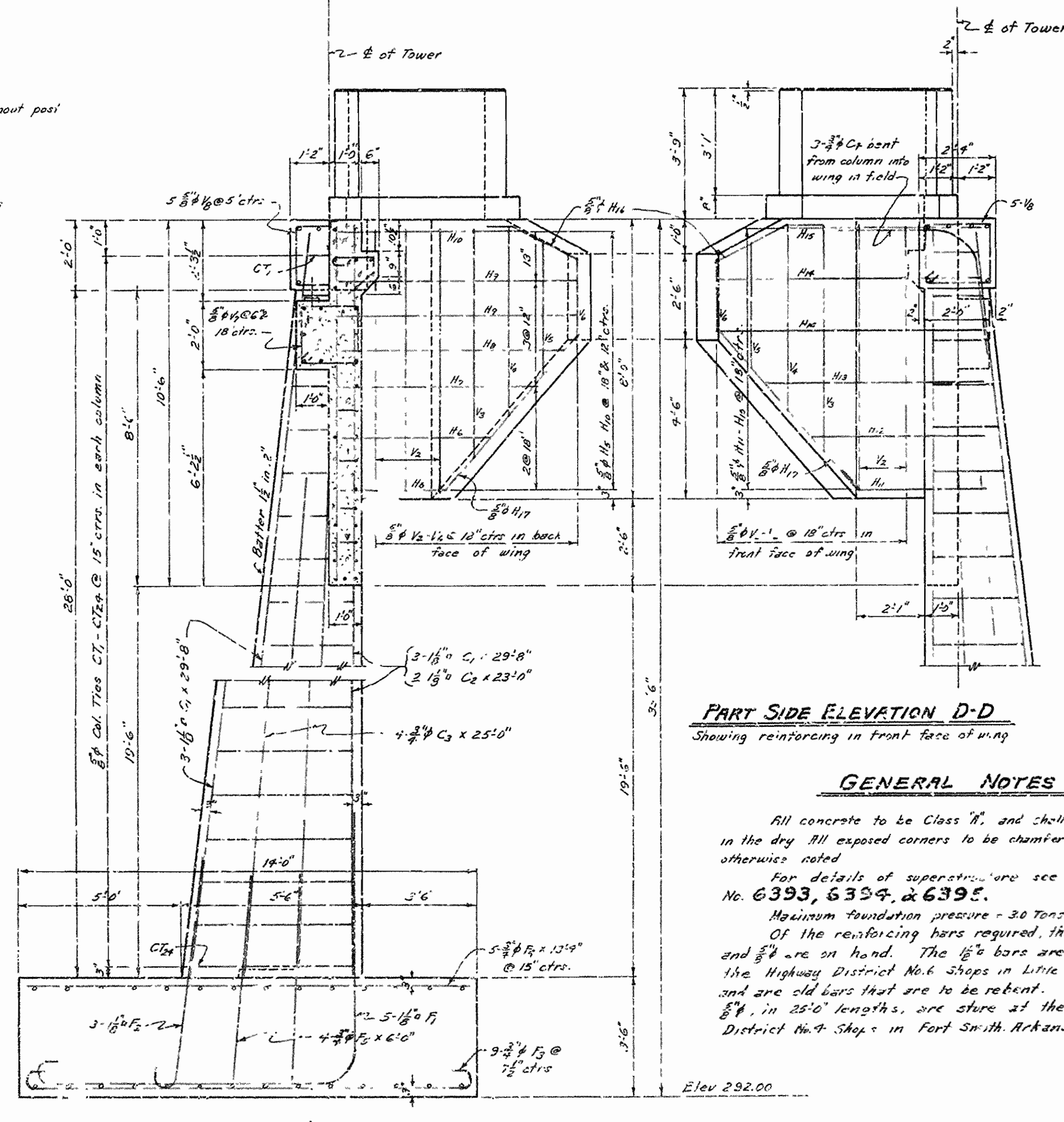
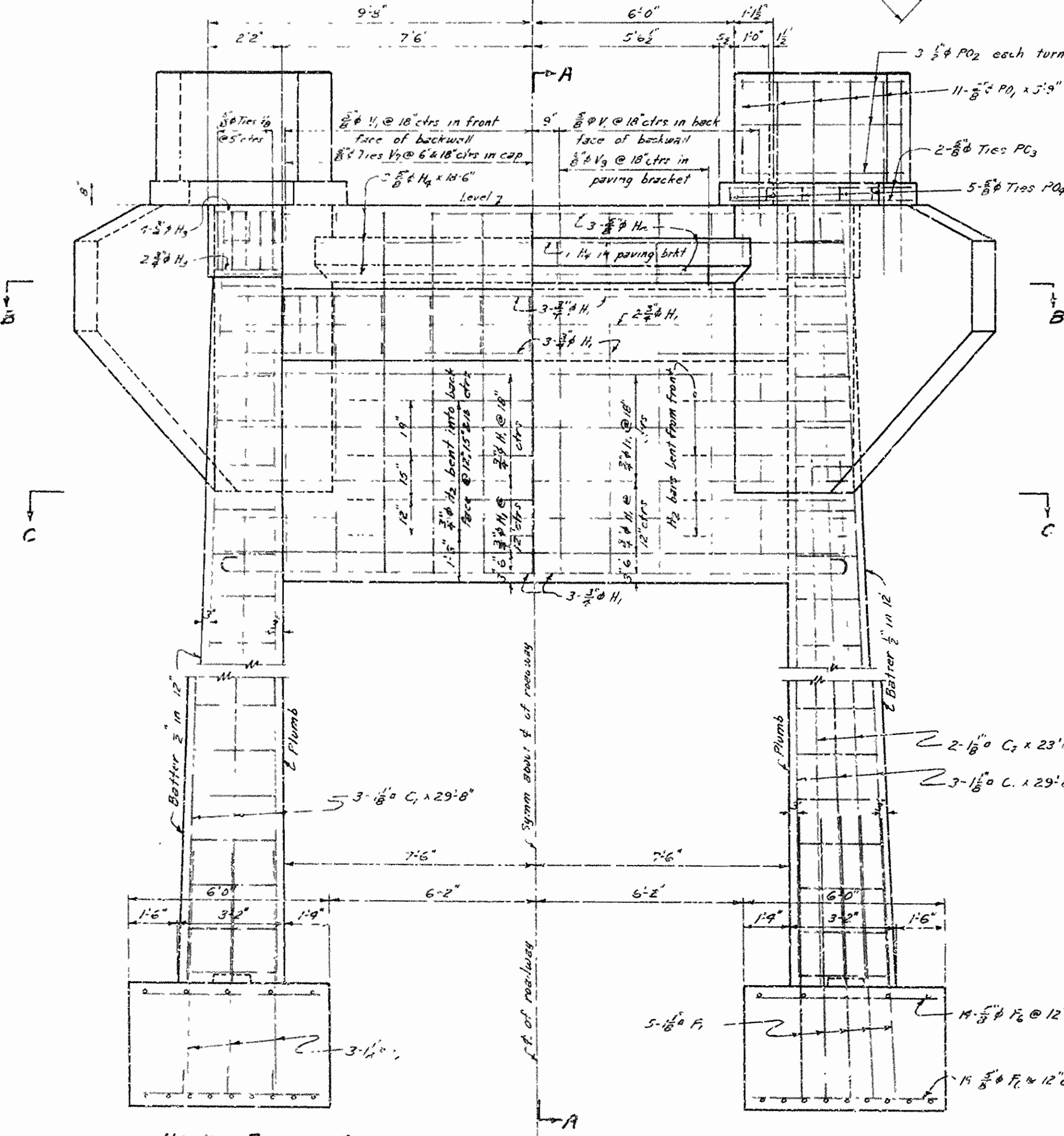
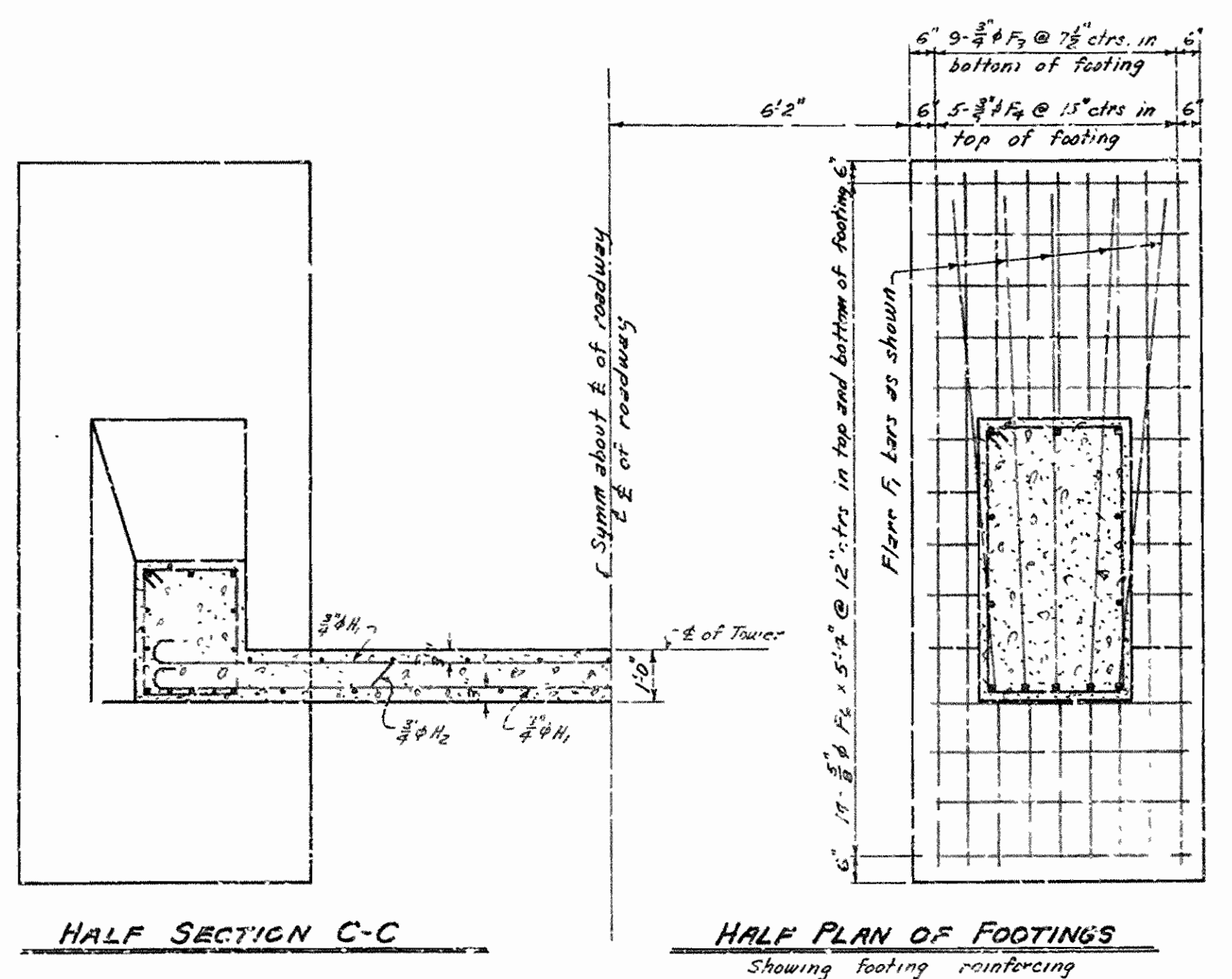
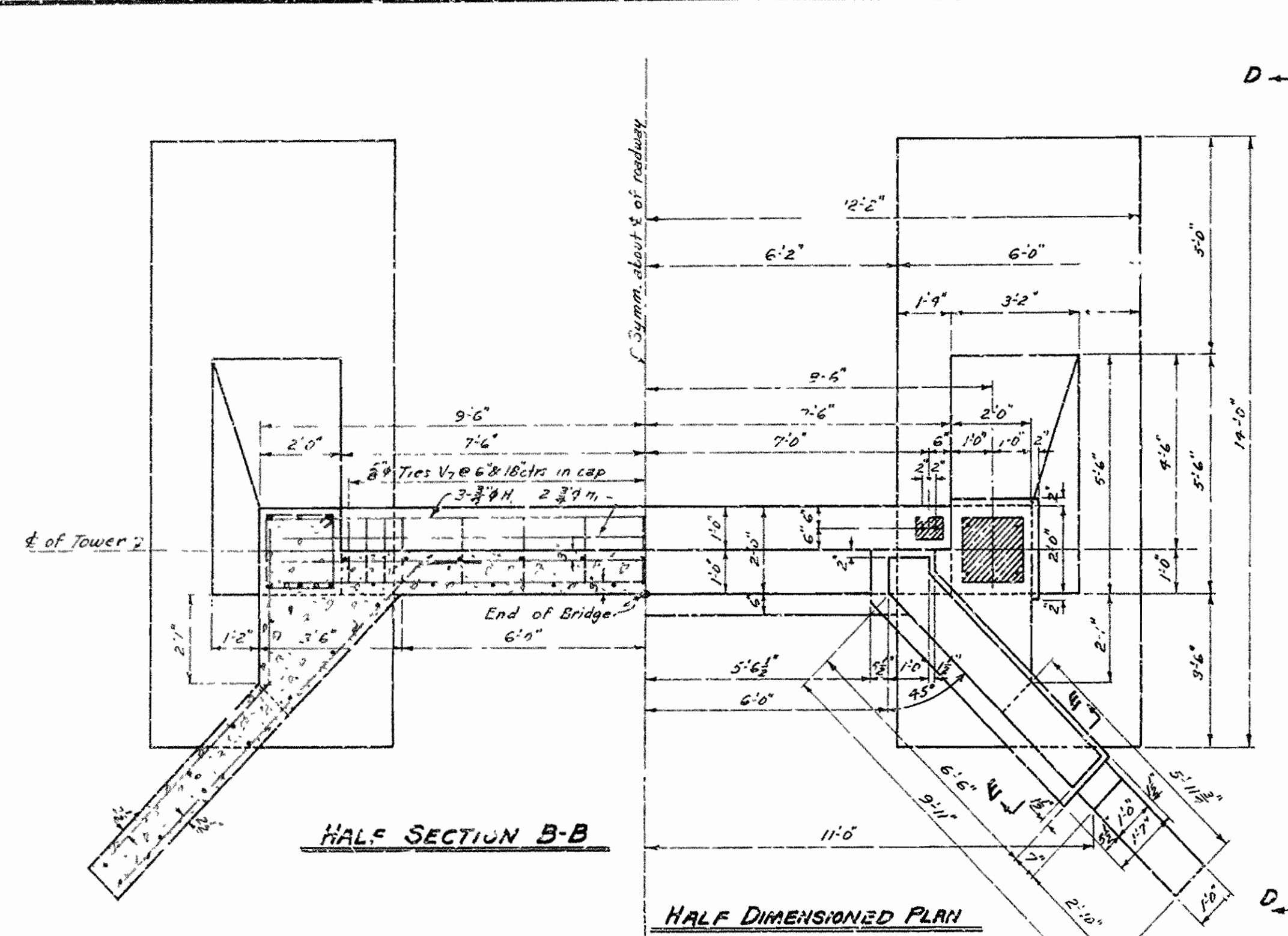
W.C.H.
PRINCIPAL HIGHWAY ENGINEER - BRIDGE

FED. ROAD DIST. NO.	STATE	PROJECT NO.	FISCAL YEAR	SHEET NO.	TOTAL SHEETS
6	ARK.		1942	7	12
STATE JOB NO. 5243					

BAR LIST FOR ABUTMENT No. 2

STRAIGHT BARS				BENT BARS				BENDING DIAGRAM
MARK	SIZE	No. REQD.	LENGTH	MARK	SIZE	No. REQD.	LENGTH	
C ₁	1/2"	12	29'-8"	F ₁	1/2"	10	18'-0"	
C ₂	1/2"	4	23'-0"	F ₂	1/2"	6	8'-0"	
C ₃	3/4"	8	25'-0"	F ₃	3/4"	18	18'-10" 13'-9" 0'-6"	
C ₄	3/4"	6	9'-0"	H ₁	3/4"	21	20'-0" 18'-8" 0'-6"	
F ₄	3/4"	10	13'-9"	H ₂	3/4"	9	20'-5"	
F ₅	3/4"	8	6'-0"	H ₃	3/4"	2	6'-2" 4'-8" 1'-6"	
F ₆	3/4"	56	5'-9"	H ₄	3/4"	2	8'-2" 6'-8" 1'-6"	
H ₉	3/4"	12	1'-11"	H ₇	3/4"	3	10'-2" 8'-8" 1'-6"	
H ₆	3/4"	7	18'-6"	H ₈	3/4"	2	1'-6" 10'-0" 1'-6"	
H ₇	3/4"	4	7'-3"	H ₅	3/4"	4	12'-0" 10'-6" 1'-6"	
V ₁	3/4"	21	10'-2"	H ₁₀	3/4"	2	9'-9" 7'-0" 1'-6"	
V ₂	3/4"	10	7'-8"	H ₁₁	3/4"	2	4'-6" 1'-0" 3'-6"	
V ₃	3/4"	4	6'-8"	H ₁₂	3/4"	2	5'-6" 2'-0" 3'-6"	
V ₄	3/4"	4	5'-6"	H ₁₃	3/4"	2	7'-6" 4'-0" 3'-6"	
V ₅	3/4"	4	3'-10"	H ₁₄	3/4"	4	9'-6" 6'-0" 3'-6"	
V ₆	3/4"	4	2'-3"	H ₁₅	3/4"	2	6'-10" 3'-9" 3'-6"	
PO ₁	3/4"	22	5'-9"	H ₁₆	3/4"	4	4'-3"	
CT ₁ to CT ₂	3/4"	2 Each	Varies 7'-0" to 16'-6"				Varies 1'-6" to 1'-0" 2'-3"	
V ₇	3/4"	15	7'-5"				1'-8" 1'-8"	
V ₈	3/4"	10	8'-1"				2'-0" 1'-0"	
V ₉	3/4"	9	3'-9"					
PO ₂	3/4"	6	14'-5"					
PO ₃	3/4"	4	16'-5"					
PO ₄	3/4"	10	4'-1"					

NOTE - Dimensions relating to reinforcing steel are to center of bars



PART SIDE ELEVATION D-D
Showing reinforcing in front face of wing

GENERAL NOTES

All concrete to be Class "A", and shall be poured in the dry. All exposed corners to be chamfered 3" unless otherwise noted.

For details of superstructure see Drawing No. 6393, 6394, & 6395.

Maximum foundation pressure - 30 tons sq. ft.

Of the reinforcing bars required, the 1/2" #4 and 3/4" #5 are on hand. The 1/2" bars are stored at the Highway District No. 6 Shop in Little Rock, Arkansas, and are old bars that are to be rebent. The 3/4" and 1/2" #5, in 25'-0" lengths, are stored at the Highway District No. 4 Shop in Fort Smith, Arkansas.

DETAILS OF ABUTMENT NO. 2
BRIDGE OVER SOUTH SYLAMORE CREEK
YELLVILLE - MOUNTAIN VIEW ROAD
STONE COUNTY
ROUTE 14 SEC. 6

ARKANSAS STATE HIGHWAY COMMISSION
LITTLE ROCK, ARK.

Drawn By: WCH Date: 5-23-42
Traced By: WCH Date: 7-31-42
Checked By: _____ Date: _____
BRIDGE NO. 2236 DRAWING NO. 6392

W. C. H. W. C. H.
PRINCIPAL HIGHWAY ENGINEER (BRIDGE)

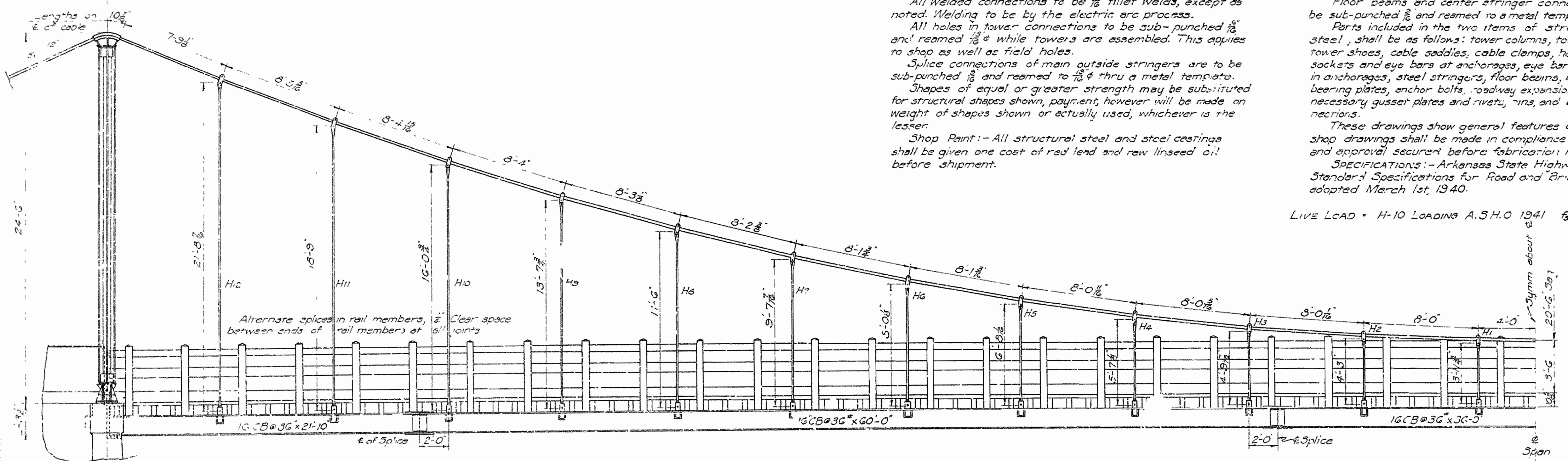
FED. ROAD DIST. NO.	STATE	PROJECT NO.	FISCAL YEAR	SHEET NO.	TOTAL SHEETS
6	ARK.		1942	8	12
STATE JOB NO. 5243					

STRUCTURAL STEEL NOTES

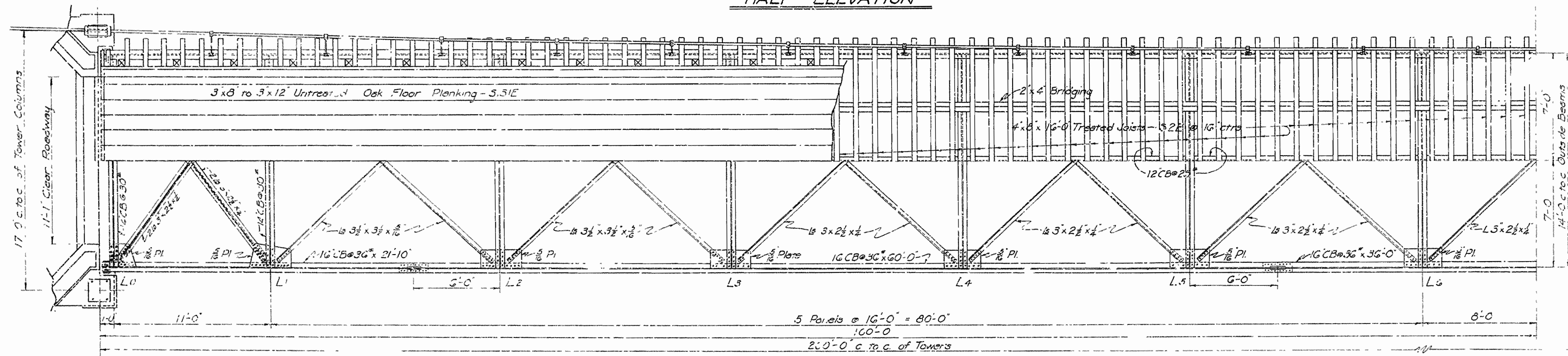
Rivets $\frac{3}{4}$ " ϕ . Open holes $\frac{1}{8}$ " ϕ . All field connections shall be bolted, using machine bolts, unless otherwise noted. All welded connections to be $\frac{1}{8}$ " fillet welds, except as noted. Welding to be by the electric arc process. All holes in tower connections to be sub-punched $\frac{1}{8}$ " and reamed $\frac{1}{16}$ " while towers are assembled. This applies to shop as well as field holes. Splice connections of main outside stringers are to be sub-punched $\frac{1}{8}$ " and reamed to $\frac{1}{16}$ " thru a metal template. Shapes of equal or greater strength may be substituted for structural shapes shown, payment, however will be made on weight of shapes shown or actually used, whichever is the lesser. Shop Paint: - All structural steel and steel castings shall be given one coat of red lead and raw linseed oil before shipment.

Field Paint: - 1st coat, white lead. 2nd coat, white lead tinted with lamp black. Floor beams and center stringer connections are to be sub-punched $\frac{1}{8}$ " and reamed to a metal template. Parts included in the two items of structural steel, shall be as follows: tower columns, tower bracing, tower shoes, cable saddles, cable clamps, hangers, cable sockets and eye bars at anchorages, eye bars and channels in anchorages, steel stringers, floor beams, lateral bracing, bearing plates, anchor bolts, roadway expansion devices, and necessary gusset plates and rivets, pins, and bolts for connections. These drawings show general features of design only, shop drawings shall be made in compliance with specifications and approval secured before fabrication is begun. SPECIFICATIONS: - Arkansas State Highway Commission, Standard Specifications for Road and Bridge Construction, adopted March 1st, 1940.

LIVE LOAD - H-10 LOADING A.S.H.O. 1941 $F_1=20,000 \frac{lb}{sq. ft.}$ $F_2=14,000 \frac{lb}{sq. ft.}$



25 Hanger Spacing @ 8'-0" - 200'-0" c. to c. of Towers
HALF ELEVATION



5 Panels @ 16'-0" = 80'-0"
20'-0" c. to c. of Towers
HALF PLAN

STRUCTURAL STEEL YET TO BE OBTAINED

- 16 - 8 x 1 x 2-1/2 Eye bars at anchorages
 - 24 - 3/4 x 6 Ring fills at anchor
 - 8 - 3/4 x 6 Ring fills at anchorages
 - 4 - 3/4 x 6 Ring fills at anchorages
 - 4 - 3/4 Pin with nuts at anchorages
 - 4 - 2 1/2 Pin with nuts at anchorages
 - 16 - 6 x 3/4 x 0-6 Pin plates in anchorages
 - 8 - 2 1/2 Pin with nuts in anchorages
 - 4 - Cable sockets with eye bars and nuts
 - 4 - Tower shoes - all material
 - 4 - 8 x 2 x 1-4 Bearing plates
 - 8 - 1/2 x 4 x 2 x 1-1
 - 4 - 4 x 1/2 St. flange plates
 - 43 - Hanger clamps
 - 48 - 1 1/2 x 5 bolts with nuts
 - 48 - 1 1/2 x 5 bolts with nuts
 - 48 - 1 1/2 x 4 bolts with nuts
 - 96 - 3/4 x 3/4 x 0-11 Pin plates
 - 96 - 6 x 3/4 x 0-6 Fill plates
 - All 1/2 gusset plates for lateral system
 - All 1/2 gusset plates for towers
 - Some of 1/2 stay plates for towers
 - 8 - 6 x 2 x 0-8 End bearing plates
 - 8 - 8 x 1-8 Anchor bolts with nuts and washers
 - 6 - 1/2 x 5 x 3/4 x 0-7 Rodw. Exp. Power connection
 - 2 - 8 x 3/4 x 1-0 Rodw. Exp. Device plates
- All rivets, bolts, and welds

STRUCTURAL STEEL ON HAND

NEW MATERIAL					OLD MATERIAL						
WHERE TO BE USED	SIZES	LENGTHS REQUIRED	CUT FROM	WASTE AND ITS USE	WHERE STORED	WHERE TO BE USED	SIZES	LENGTHS REQUIRED	CUT FROM	WASTE AND ITS USE	WHERE STORED
Van Stringers	12 CB @ 36"	2 @ 22'	1 @ 60'	1 @ 16' Use as splice material	Little Rock	Hanger Rods	1 1/2"	Various Lengths	Assorted Length		Little Rock
Main Stringers	16 CB @ 36"	4 @ 30'	4 @ 60'	None	Little Rock	Tower Struts	1/2 4 x 3 x 1/2	8 @ 16'-4"	8 @ 24'-0"	3 @ 7'-8" Use as connection	Fort Smith
Van Stringers	16 CB @ 36"	2 @ 36' & 2 @ 22'	2 @ 60'	2 @ 2' Use as splice material	Little Rock	Tower Bracing	1/2 3 x 2 1/2 x 1/2	2 @ 11'-0" & 2 @ 2'-6" @ 5'-6"	13 @ 18'-0"		Fort Smith
Floor Beams	12 CB @ 30"	3 @ 12'	3 @ 60'	3 @ 4'	Little Rock	Lower Laterals	1/2 3 x 2 1/2 x 1/2	8 @ 20'-0"	8 @ 32'-0"	2 @ 12'-0" Use as connection	Fort Smith
Floor Beams	14 CB @ 30"	2 @ 14'	2 @ 15'	2 @ 1'	Little Rock	Lower Laterals	1/2 3 x 2 1/2 x 1/2	14 @ 20'-0"	14 @ 22'-0"	14 @ 2'-0"	Fort Smith
Tower Columns	14 CB @ 30"	4 @ 22.5'	2 @ 60'	2 @ 15' Use above	Little Rock	Lower Laterals	1/2 3 x 2 1/2 x 1/2	8 @ 17'-0"	8 @ 18'-0"	8 @ 1'-0"	Fort Smith
Center Stringers	12 CB @ 25"	6 @ 16' & 2 @ 12'	2 @ 60'	None	Little Rock	Floor Beam Connections	1/2 3 x 3 1/2 x 1/2	5 @ 0'-11"	5 @ 12'-0"	if not enough use 3/4 x 3/4 waste	Fort Smith
Center Stringers	12 CB @ 25"	3 @ 16'	1 @ 20'	1 @ 12'	Little Rock	Center Beam Connections	1/2 3 x 3 1/2 x 1/2	5 @ 0'-11"	5 @ 12'-0"		Fort Smith
Center Stringers	12 CB @ 25"	2 @ 16'	1 @ 60'	1 @ 25' Use below	Little Rock	Rodw. Exp. Devices	1/2 8 x 2 1/2 x 1/2	2 @ 11'-0"	2 @ 17'-0"	2 @ 6'-0"	Fort Smith
Tower Columns	12 CB @ 25"	1/2 @ 14'	1 @ 28'	None	Little Rock	Rodw. Exp. Devices	1/2 1 1/2 x 1/2 x 1/2 Straps	2 @ 1'-0"		Cut from c'd stay plates	Fort Smith
Tower Columns	12 CB @ 25"	1/2 @ 22.5'	1 @ 50'	1 @ 15'	Little Rock	Anchorages - Eye-bars	2 x 8"	12 @ 16'-8"	12 @ 16'-8"		Fort Smith
Anchorages	10 @ 15.3"	8 @ 5'-0"	1 @ 60'	1 @ 20'	Little Rock	Anchorages - Eye-bars	2 x 8"	8 @ 23'-8 1/2"	8 @ 23'-8 1/2"		Fort Smith
Rodw. Exp. Devices	10 @ 15.3"	2 @ 15'-0"	1 @ 60'	1 @ 30'	Little Rock	Tower Stay Plates	6 x 1/2 x 1-1/2	5 @ 1'-1/2"		Cut part from old material	Fort Smith

GENERAL DETAIL OF 200'-0" SUSPENSION SPAN
BRIDGE OVER SOUTH SYLAMORE CREEK
YELLEVILLE-MOUNTAIN VIEW ROAD
STONE COUNTY
ROUTE 14 SEC. 6

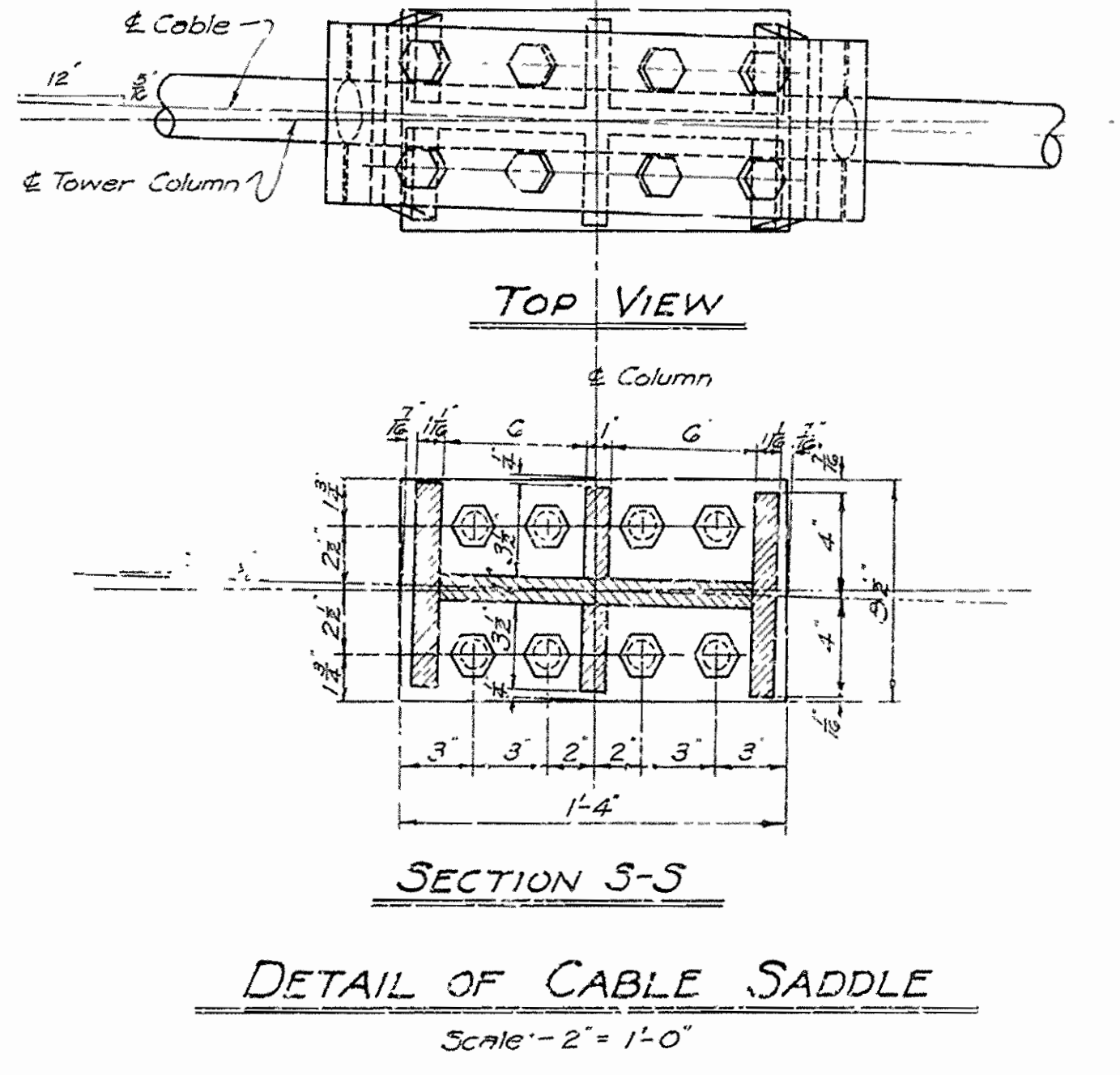
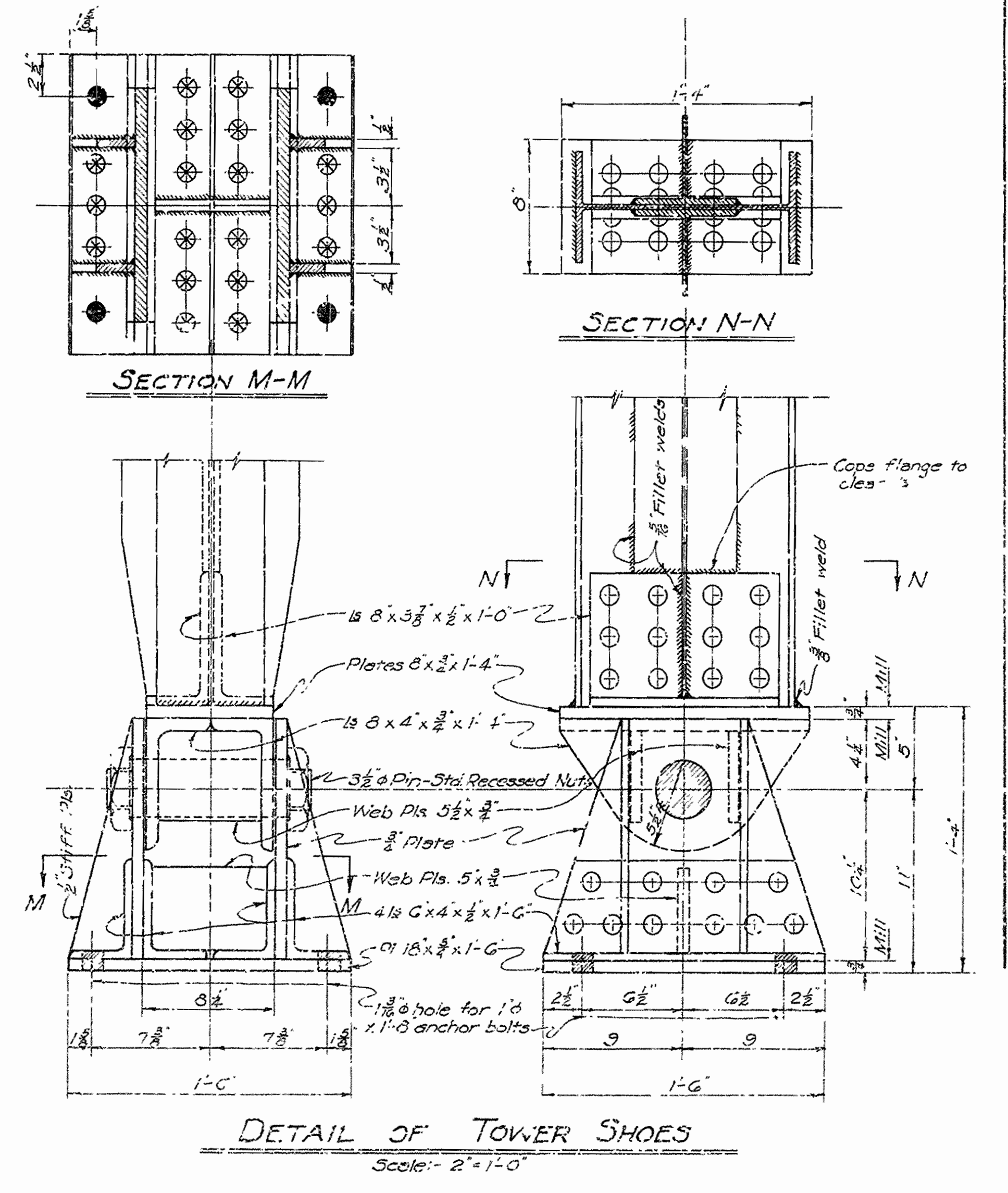
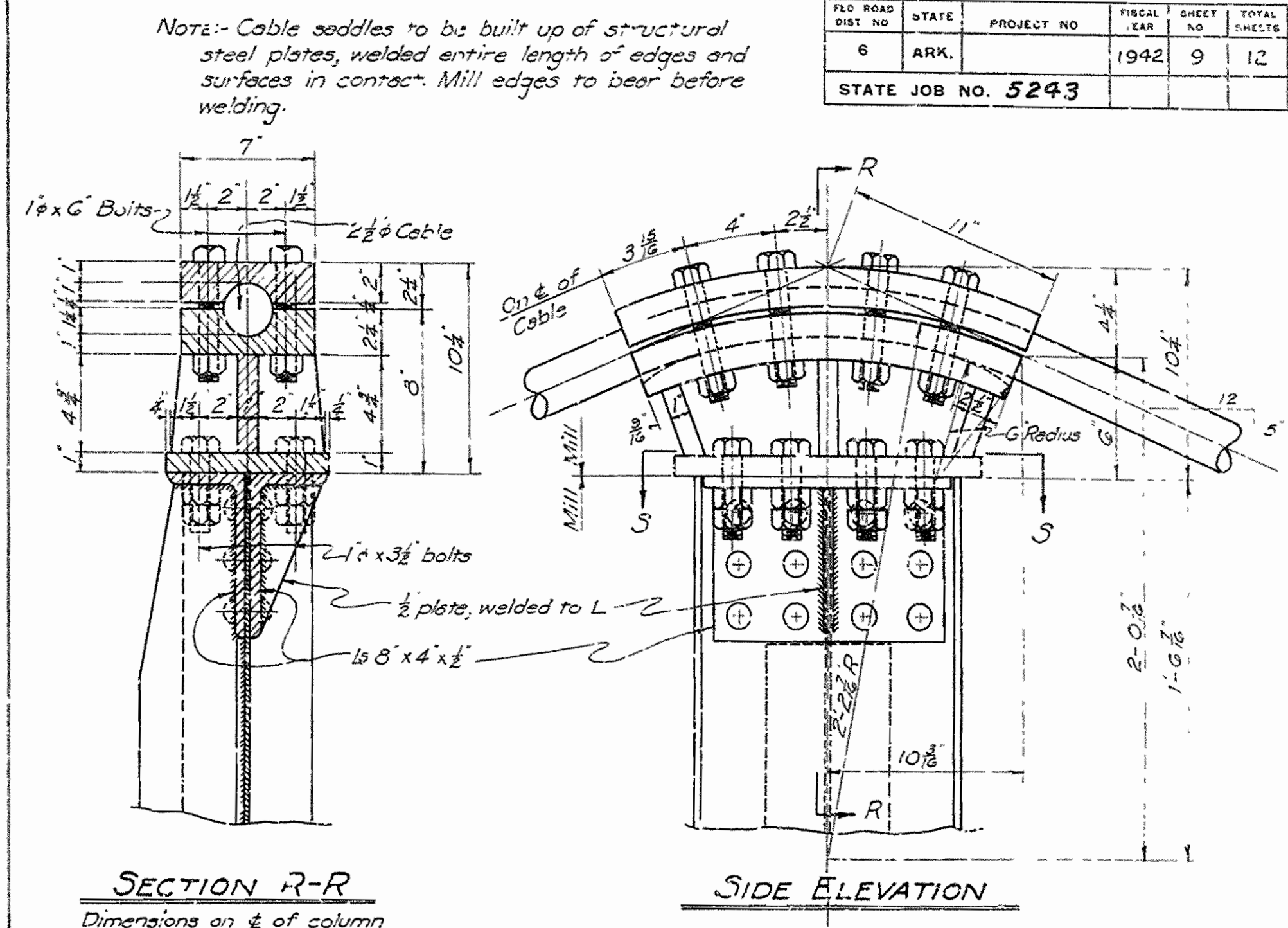
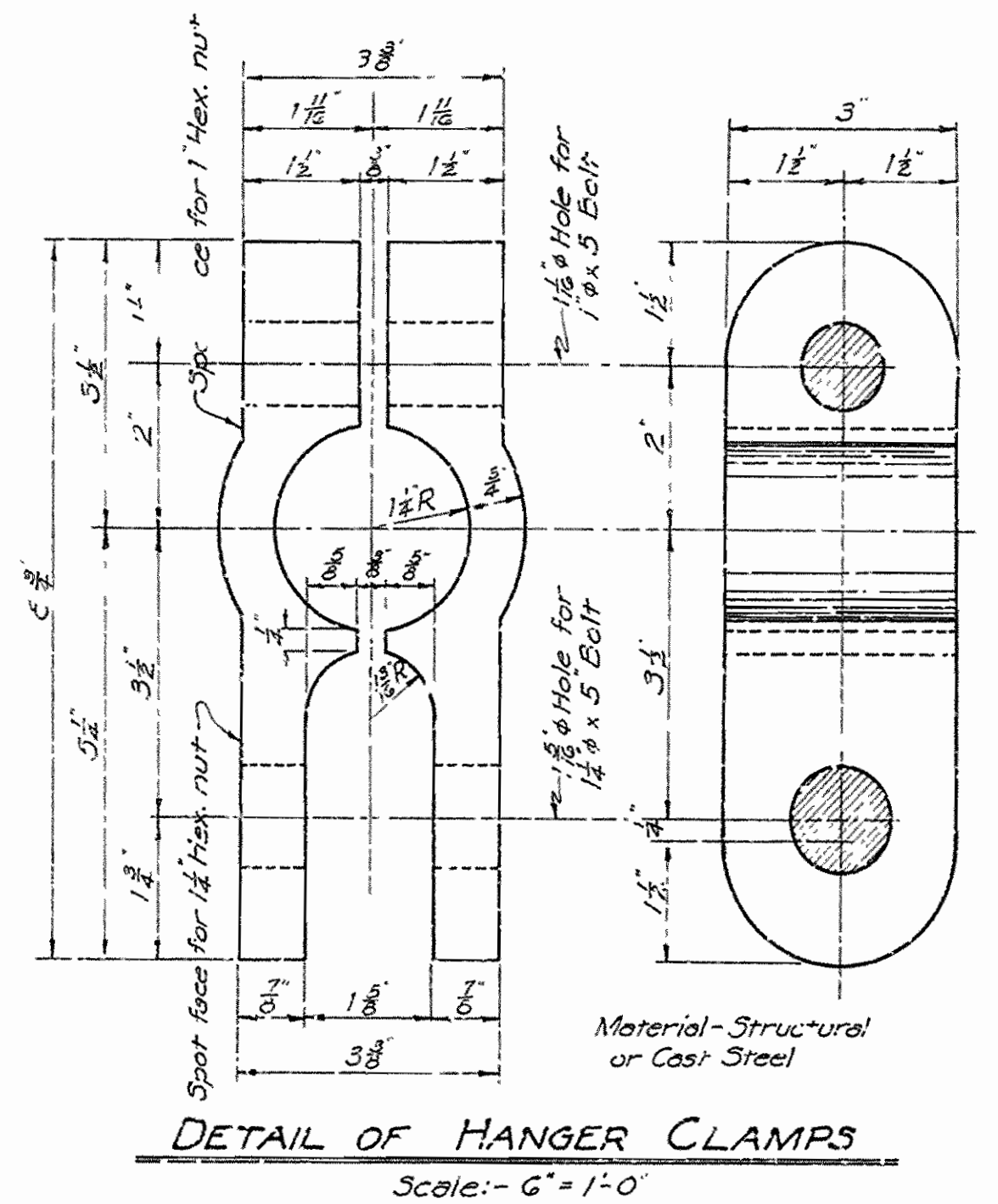
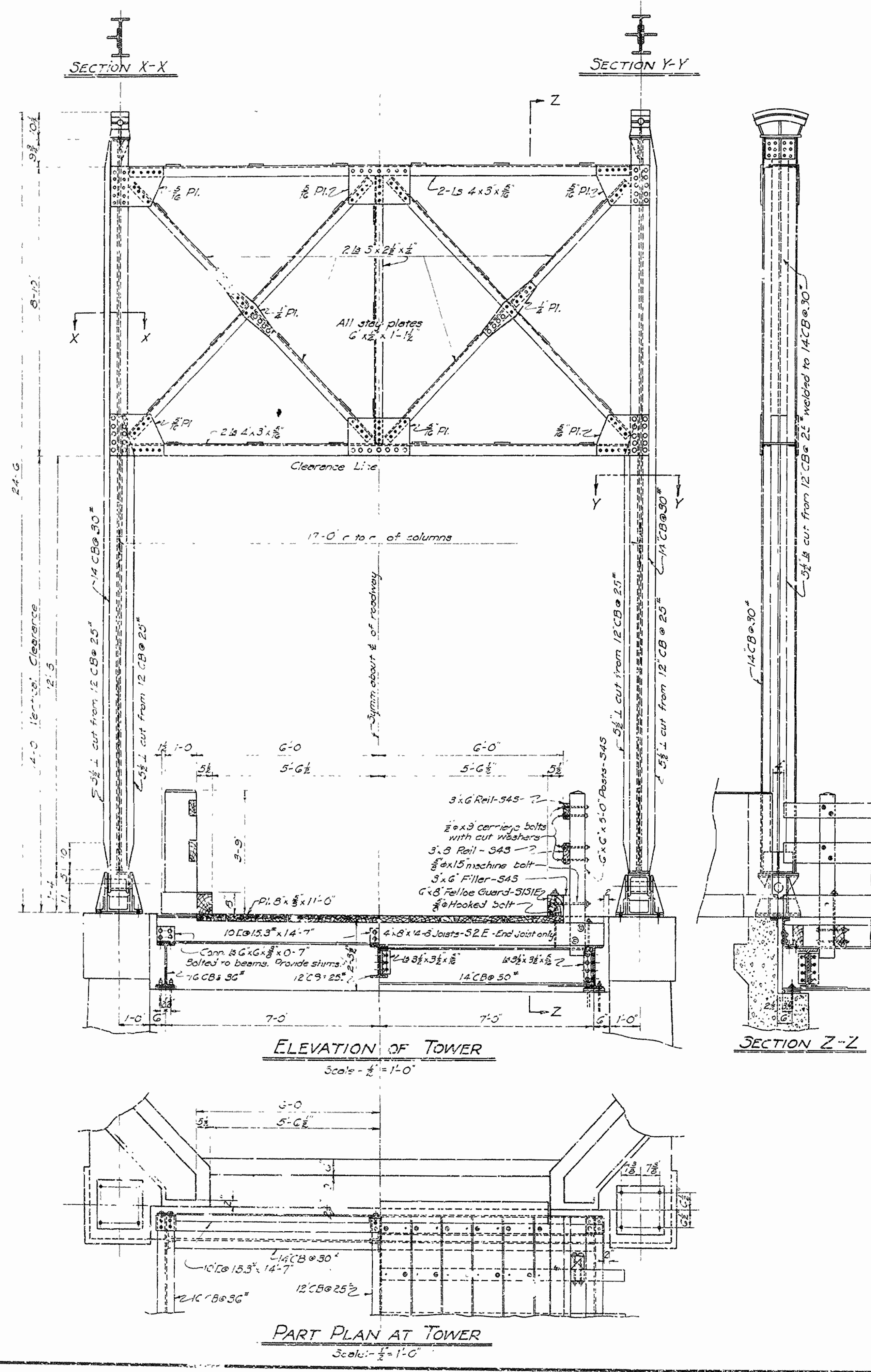
ARKANSAS STATE HIGHWAY COMMISSION
LITTLE ROCK, ARK.
DRAWN BY: M.C. [Signature] DATE: 5-8-42
TRACED BY: M.W. [Signature] DATE: 8-4-42
CHECKED BY: [Signature] DATE: []
BRIDGE NO. 22.20 DRAWING NO. 6393

NOTE: Payment for fabrication and erection of structural steel on hand shall be made at unit contract price per pound bid for fabrication and erection of structural steel on hand.

NOTE: Material on hand stored at Little Rock is at the Highway District No. 6 Shops while that at Fort Smith is at the Highway District No. 4 Shops.

M.C. [Signature]
PRINCIPAL HIGHWAY ENGINEER (BRIDGE)

FLO. ROAD DIST. NO.	STATE	PROJECT NO.	FISCAL YEAR	SHEET NO.	TOTAL SHEETS
6	ARK.		1942	9	12
STATE JOB NO. 5243					



GENERAL NOTES
 See Drawing No. 6393 for general details of 200'-0" Suspension Span.
 For details of Floor System and Deck see Drawing No. 6395.
 For General Notes on Timber see Drawing No. 6395.
 For General Notes for Structural Steel see Drawing No. 6393.

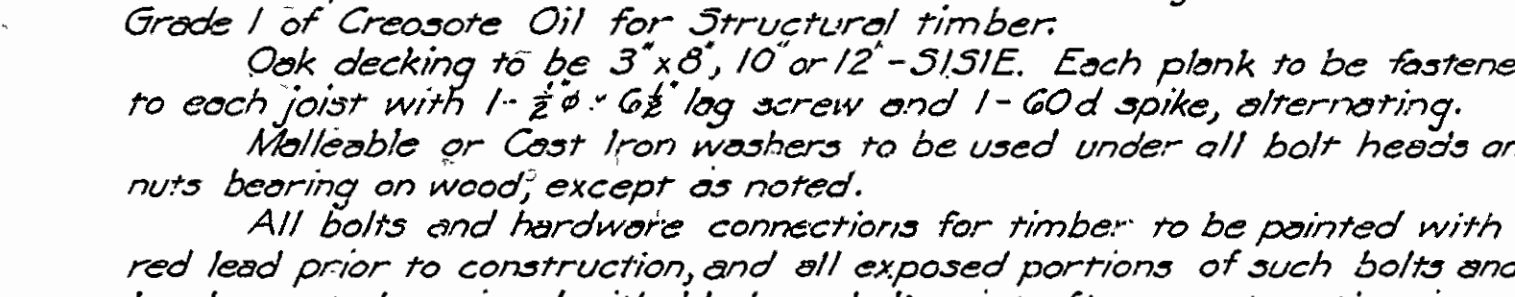
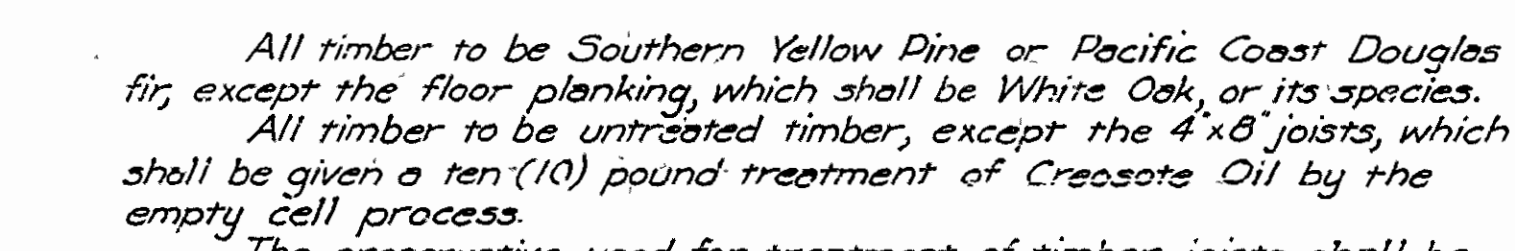
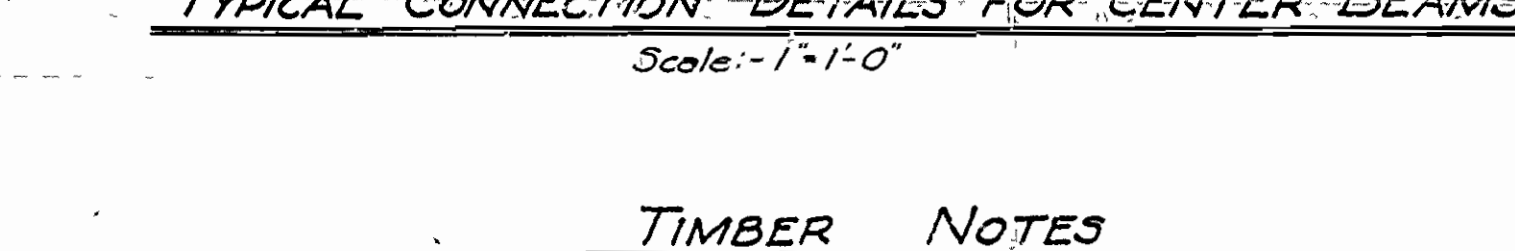
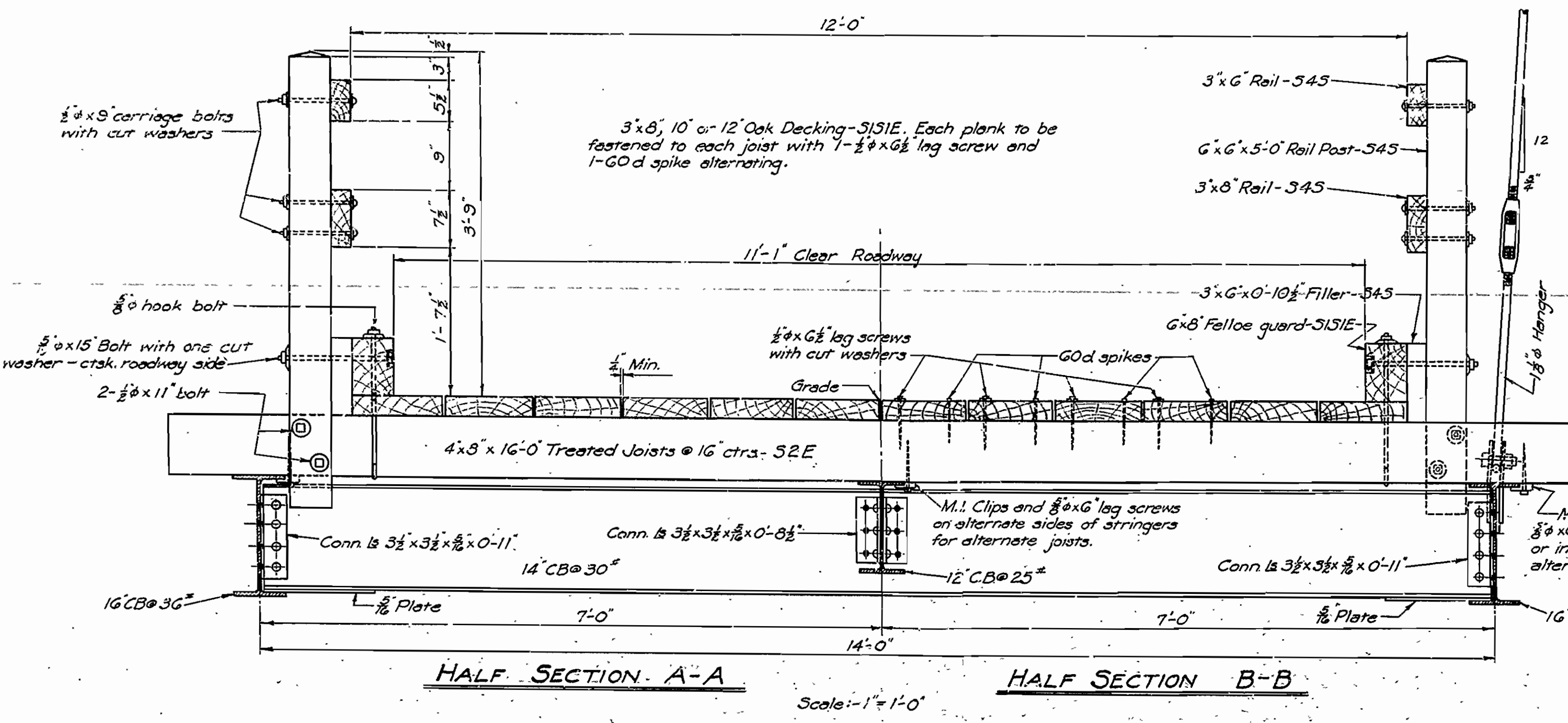
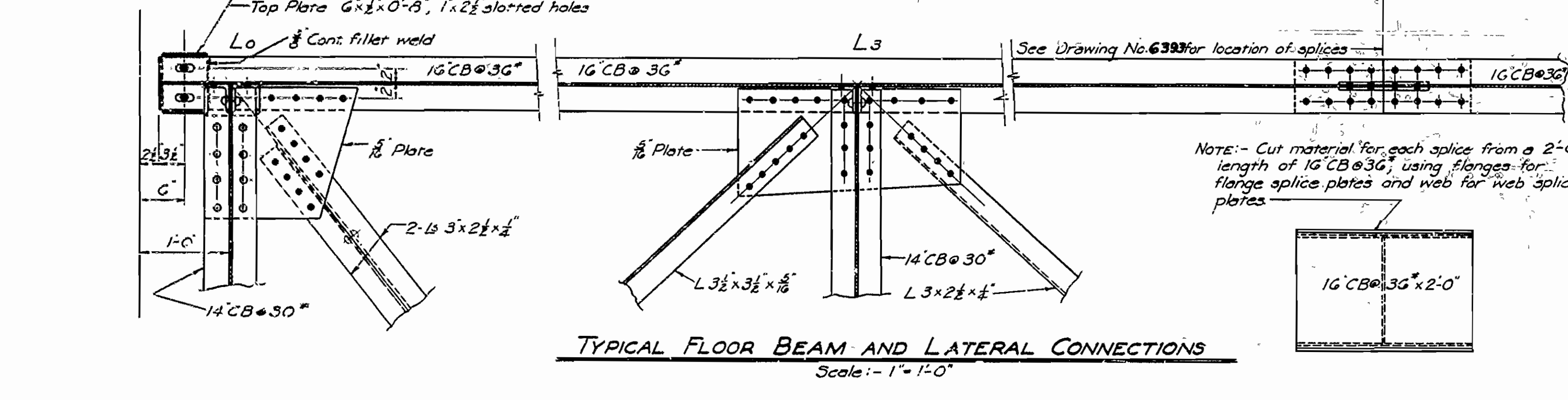
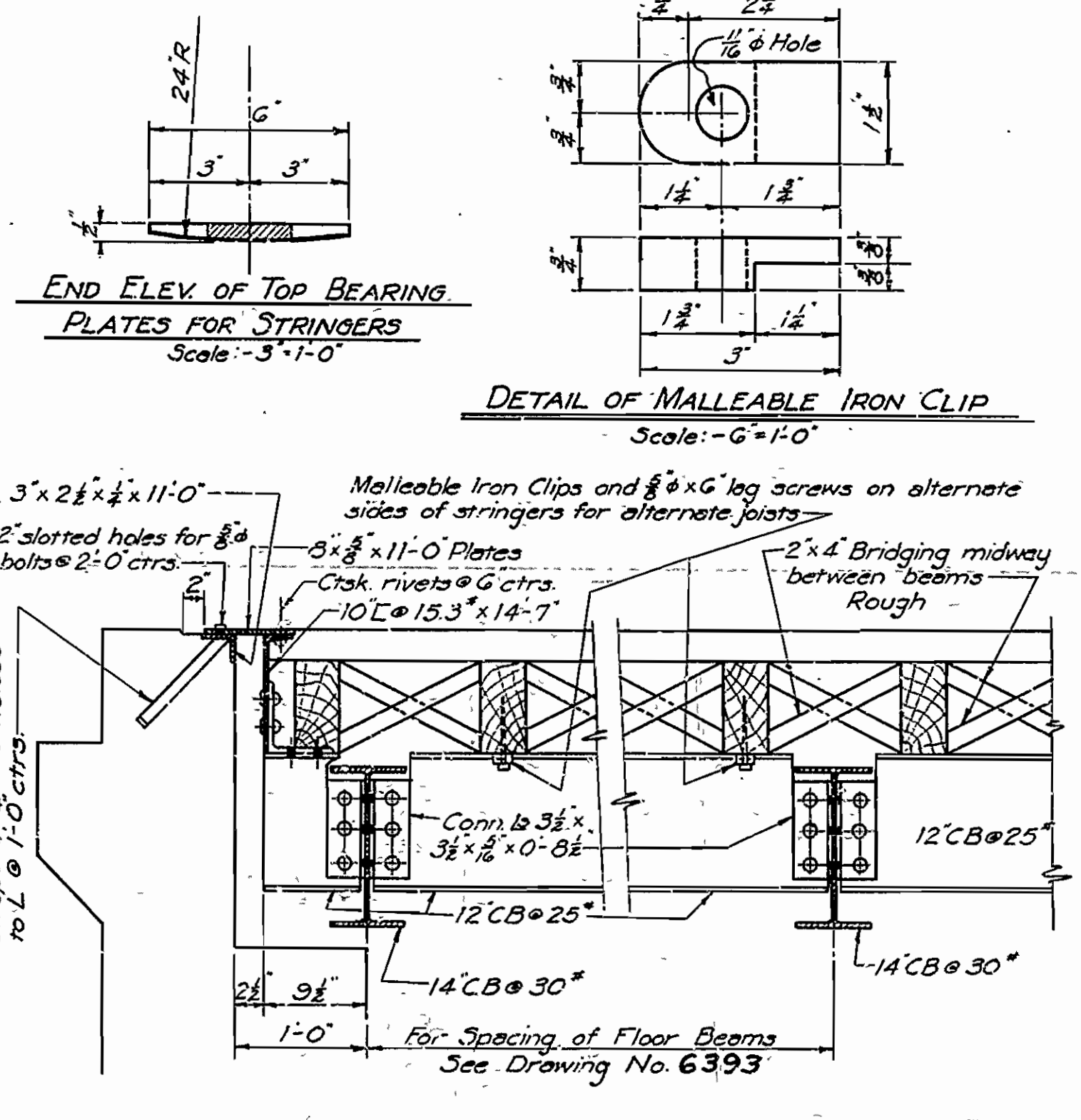
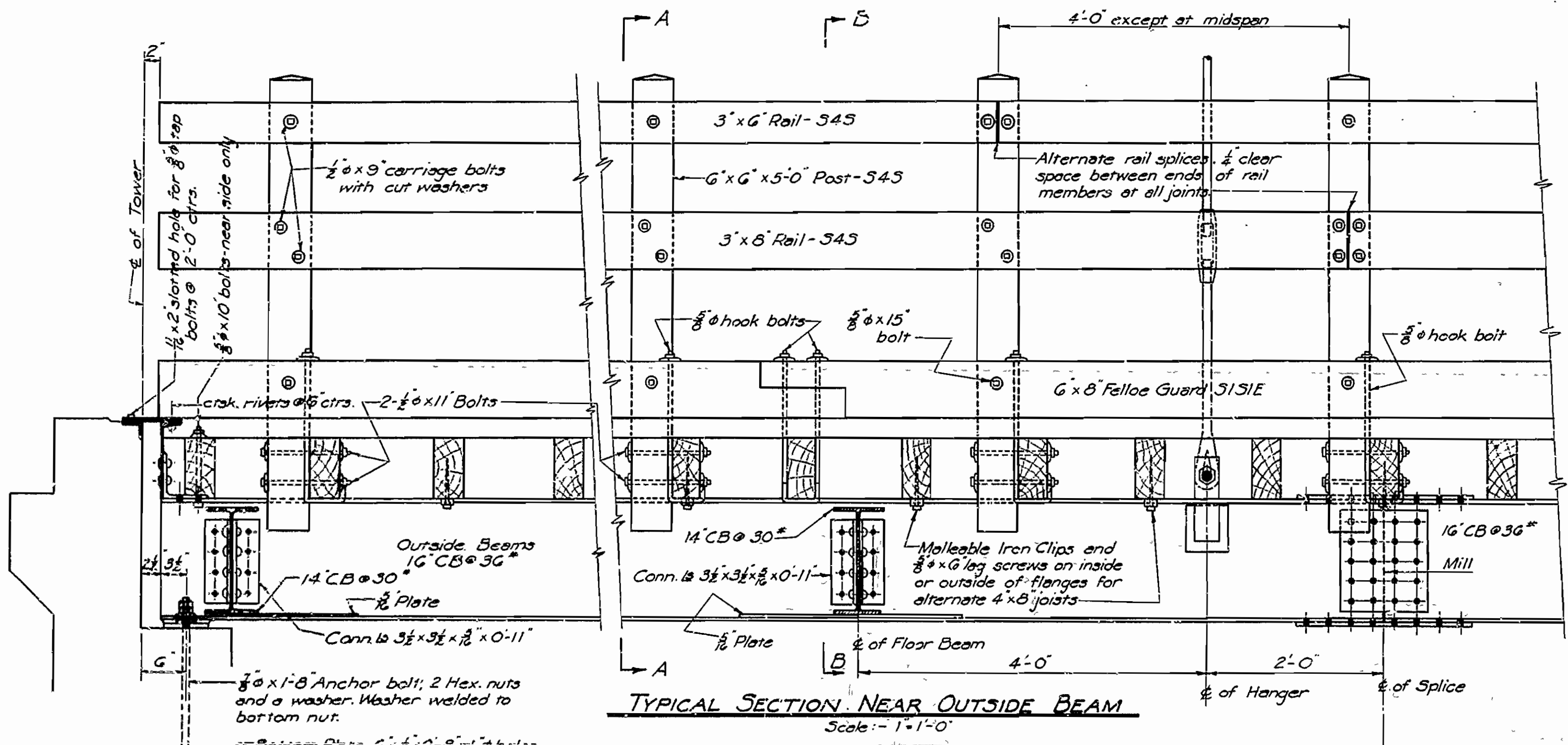
DETAILS OF TOWER AND HANGER CLAMPS
BRIDGE OVER SOUTH SYLAMORE CREEK
YELLVILLE-MOUNTAIN VIEW ROAD
STONE COUNTY
ROUTE 14 SEC. C

ARKANSAS STATE HIGHWAY COMMISSION
 LITTLE ROCK, ARK.
 Drawn By: WCH. Date: 6-10-42
 Traced By: MWH. Date: 9-1-42
 Checked By: _____ Date: _____
BRIDGE NO. 2236 DRAWING NO. 6394

NOTE: Tower shoes to be built up of structural steel shapes and plates by riveting and welding.

M. C. Bennett
 PRINCIPAL HIGHWAY ENGINEER (BRIDGE)

FED. ROAD DIST. NO.	STATE	PROJ. NO.	FISCAL YEAR	SHEET NO.	TOTAL SHEETS
6	ARK.		1942	10	12
STATE JOB NO. 5243					



TIMBER NOTES

All timber to be Southern Yellow Pine or Pacific Coast Douglas fir, except the floor planking, which shall be White Oak, or its species. All timber to be untreated timber, except the 4x8 joists, which shall be given a ten (10) pound treatment of Creosote Oil by the empty cell process.

The preservative used for treatment of timber joists shall be Grade 1 of Creosote Oil for structural timber.

Oak decking to be 3"x8", 10" or 12"-5151E. Each plank to be fastened to each joist with 1-1/2" x 6" lag screw and 1-60 d spike, alternating.

Malleable or Cast Iron washers to be used under all bolt heads and nuts bearing on wood; except as noted.

All bolts and hardware connections for timber to be painted with red lead prior to construction, and all exposed portions of such bolts and hardware to be painted with black asphalt paint after construction is completed.

Hardware, including bolts, washers, lag screws, hook bolts, spikes, and malleable iron clips shall be paid for at unit price bid for "Misc. Hardware."

SPECIFICATIONS: Arkansas State Highway Commission Standard Specifications for Road and Bridge Construction, adopted March 1, 1940.

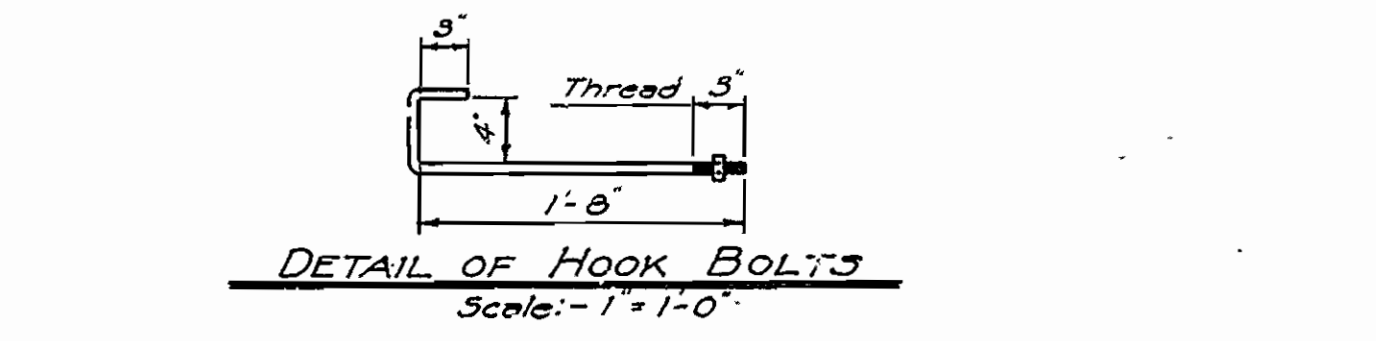
GENERAL NOTES

For general details of 200'-0" Suspension Span, see Drawing No. 6393. For details of Tower and Hanger Clamps, see Drawing No. 6394. For General Notes for Structural Steel, see Drawing No. 6395.

TREATED TIMBER		
Joists	4" x 8"	52E
UNTREATED TIMBER		
Rail Posts	6" x 6"	545
Rail Members	3" x 6" and 3" x 8"	545
Rail Post Filler	3" x 6"	545
Felloe Guard	6" x 8"	5151E
Bridging	2" x 4"	Rough
Decking	3" x 8" or 3" x 10" or 3" x 12"	5151E

LIST OF HARDWARE FOR DECK AND RAILING

100 - 5/8" x 15" Machine bolts	484 - 3/8" Cut washers
5 - 5/8" x 10" Machine bolts	260 - 5/8" M.I. washers
384 - 1/2" x 9" Carriage bolts	334 - 5/8" Cut washers
200 - 1/2" x 11" Machine bolts	400 - 1/2" M.I. washers
150 - 5/8" Hook bolts (See detail)	
450 - 5/8" x 6" Lag screws	460 - M.I. Clips (See details)
2200 - 1/2" x 6 1/2" Leg screws	2200 - 1/2" cut washers
2200 - 60 d. spikes	2400 - 12 d. nails



DETAILS OF FLOOR SYSTEM AND DECK BRIDGE OVER SOUTH SYLAMORE CREEK
YELLVILLE-MOUNTAIN VIEW ROAD
STONE COUNTY
ROUTE 14 SEC. 6
ARKANSAS STATE HIGHWAY COMMISSION
LITTLE ROCK, ARK.

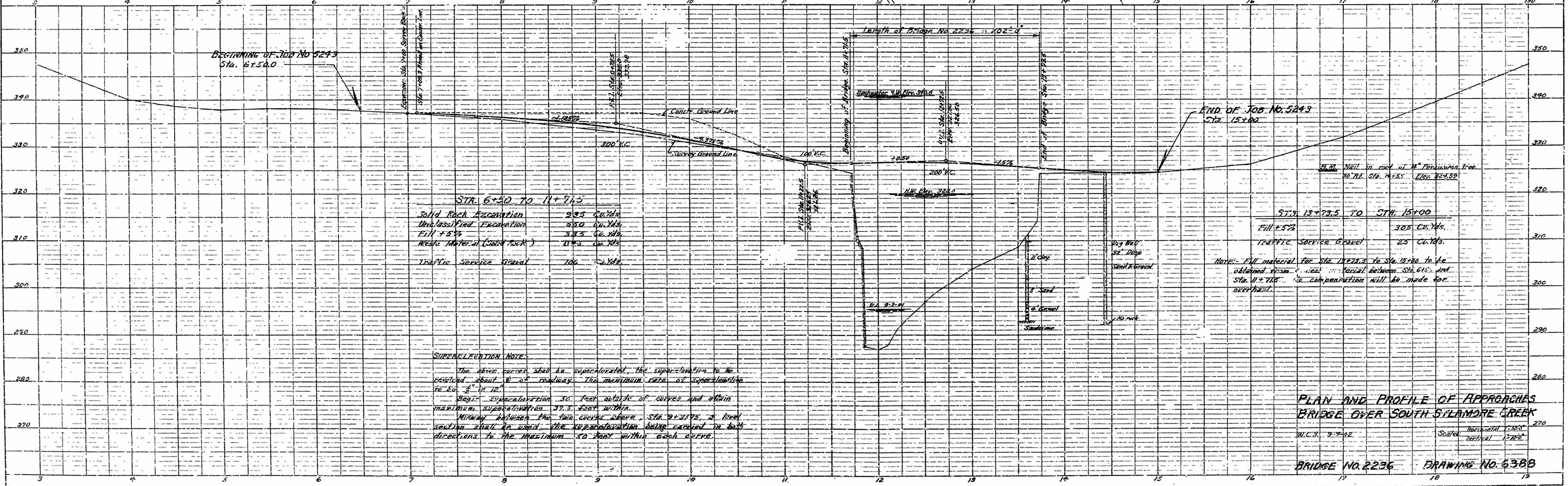
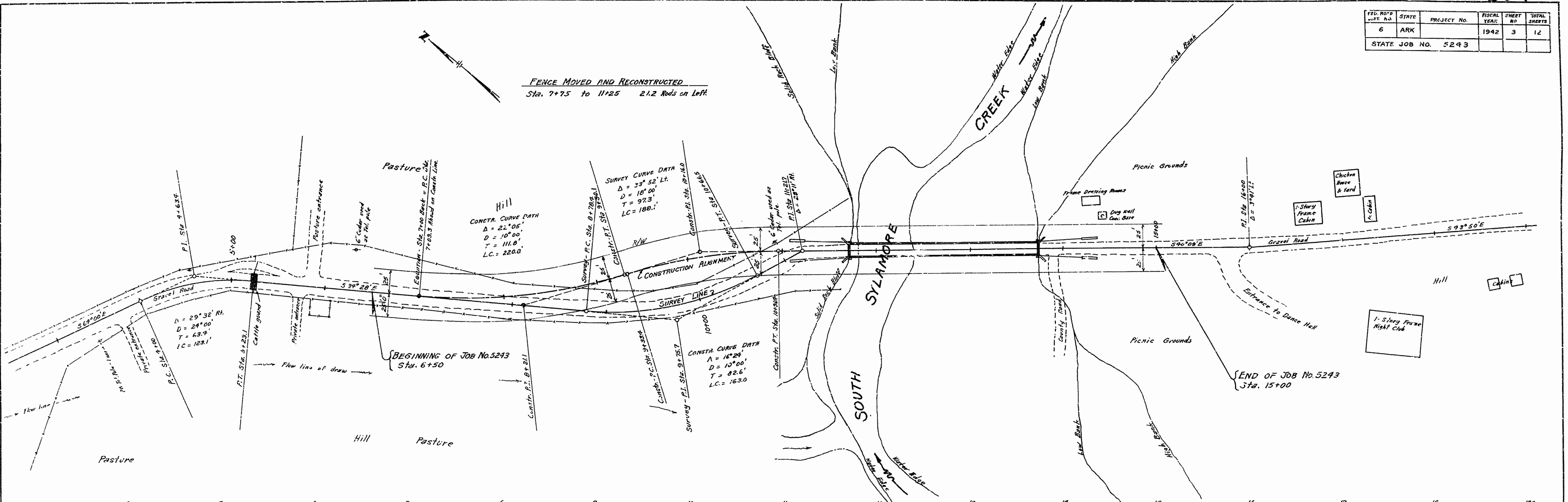
Drawn By: W.C.H. Date: 6-15-42
Traced By: M.W.H. Date: 7-31-42
Checked By: _____ Date: _____
Scale: $\frac{1}{2}$ " = 1'-0"

BRIDGE NO. 2236 DRAWING NO. 6395

M.O. GAMES
PRINCIPAL HIGHWAY ENGINEER (BRIDGE)

FED. ROAD DIST. NO.	STATE	PROJECT NO.	FISCAL YEAR	SHEET NO.	TOTAL SHEETS
6	ARK		1942	3	12
STATE JOB NO. 5243					

FENCE MOVED AND RECONSTRUCTED
Sta. 7+75 to 11+25 21.2 Rods on Left



PLAN AND PROFILE OF APPROACHES
BRIDGE OVER SOUTH SYLAMORE CREEK

W.C.H. 7-7-42
BRIDGE NO. 2236 DRAWING NO. 638B